

# Vibro - TiLe

## VERSATILE RUBBER TILE FOR GENERAL VIBRATION ISOLATION

### Description

**Vibro-TiLe** are versatile vibration isolation pads made of special compound rubber. They reduce noise, high frequency vibration and impact from machines.

They are shaped in a versatile modular waffle design. They are molded in a sheet that consists of 4X4 vibration isolation pad basic modules with dimensions of 50X50mm and they can be cut in pieces according to the specific needs of each application. A thin membrane separates the pads to provide evenly dimensioned sections that can be placed side-by-side to accommodate a machine's load.

These isolation pads are designed to perform in the same satisfactory manner, even when anchor bolts are fitted, thanks to their innovative design, creating a suitable socket for both floor and base attachment without creating a sound bridge.

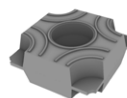
They are made of high tensile strength rubber compound and high shape factor, with a thickness of 20 mm, which contributes to increasing the nominal deflection and the effectiveness of vibration isolation.

They reduce machine impact, noise, as well as high frequency vibration.

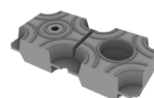
### Load Capacity

TYPE	DIMENSIONS (mm)	MAXIMUM LOAD (daN)
Vibro - Tile: Basic module	50x50X20(h)	100

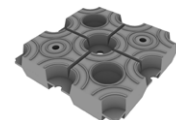
Using more modules can achieve the desired load according to the applied weight. Some examples of max recommended loading :



100 daN



200 daN

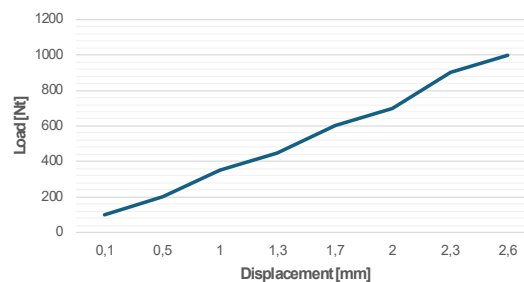


400 daN



Easy cutting

Load - Deflection Curve



### Dynamic Characteristics

Natural Frequency at max load (  $f_0$  ) = 7 Hz (for single layer).

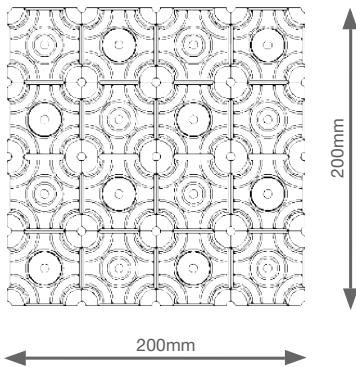
# Vibro - TiLe

## VERSATILE RUBBER TILE FOR GENERAL VIBRATION ISOLATION

### Technical characteristics

Supplied as a mat of 16 modular tile pads joined all together (4x4).

- Modular design for flexibility of load choices
- Individual 50 x 50 mm pieces can be easily cut to form the required support pattern
- Converts to a flexible support base when used with passing through screws
- Reusable in the event of machine relocation
- Easy to install
- Wide load capacity range



Several layers of pads can be stacked on top of one another for additional deflection, when steel separation shim stock is used between them.

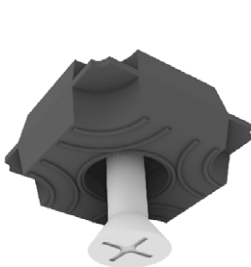
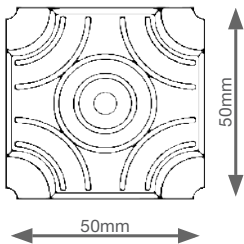
### Application

**Vibro-TiLe** pads are suitable for use under compressors, HVAC units, pumps, fans, AHU, heat pumps, generators, transformers, presses etc.

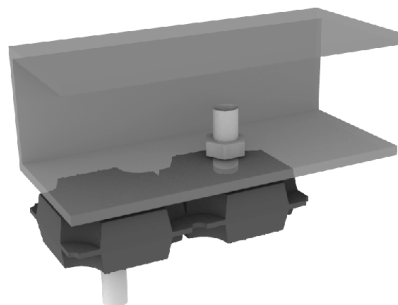
In most applications Vibro-TiLe can be self-supporting and stay stable, due to increased friction (circular rings on the bearing bases).

For applications where restraint is required, there are specially designed preformed conical holes for an M8mm screw for fixing to the machine and/or floor. If an M6 screw is used, it is also recommended to use a suitable washer.

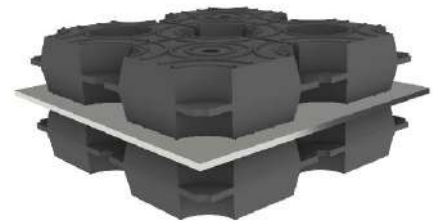
These holes are designed to not alter published load vs. deflection performance, due to not need for on-site perforation.



Basic Module  
machine fixing



Fixing on  
machine and floor



Double layer for  
increased isolation

Design and Production according to Quality Management System **ISO 9001.2008** & Environmental Management System **ISO 14001.2004**