

Vibro-BL.mini

VIBRATION ISOLATION WALL BRACE with mini

Description

Vibro-BL.mini consists of a L-shaped metal frame with various perforations for easier installation. A special vibration isolator rubber support, **Vibro-mini**, is located outside to absorb positive and negative axial forces. The pass through screw does not come in contact with the metal frame, so that no sound bridge is created.

The anti-vibration wall braces Vibro-BL.mini are used in order to add structural integrity of long and tall gypsum board walls, which are mounted on antivibration pads or based on floating floor. They avoid any direct connection between the double walls, and increase their stiffness. They prevent wall backling during earthquakes. It is useful when a secondary wall is applied for improved sound insulation where rigid connections will cause unwanted sound bridge.

They can be easily mounted on an existing brick wall, using a plastic plug and screw, or screwed to a wooden or metal frame (not included).

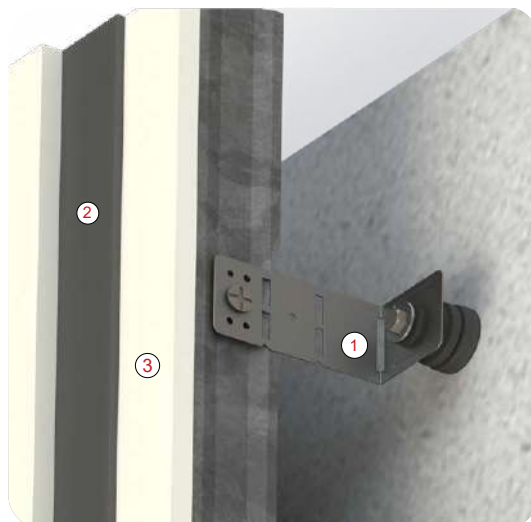
Vibro-BL.mini Selection Table

TYPE	MAX AXIAL RESTRAINT (daN)
Vibro-BL.mini.25	5 - 25
Vibro-BL.mini.50	25 - 50

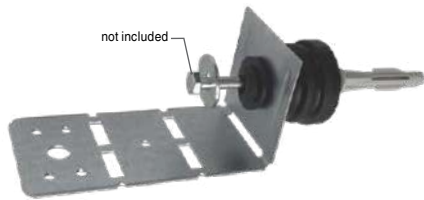
Dynamic Characteristics

Natural frequency (at maximum load) : 7-15 Hz
 Deflection (at maximum load) : 3 mm

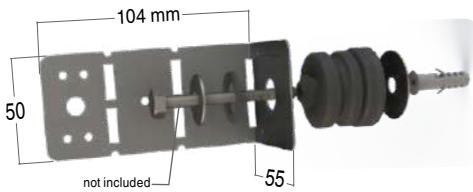
Application



- ① Vibration Wall Brace with Mini Vibro BL.mini
- ② Mass Vinyl Noise Barrier ISOLfon - Barrier
- ③ Gypsum Board



Vibro-BL.mini



Vibro-BL.mini

Design and Production according to Quality Management System ISO 9001.2008 & Environmental Management System ISO 14001.2004