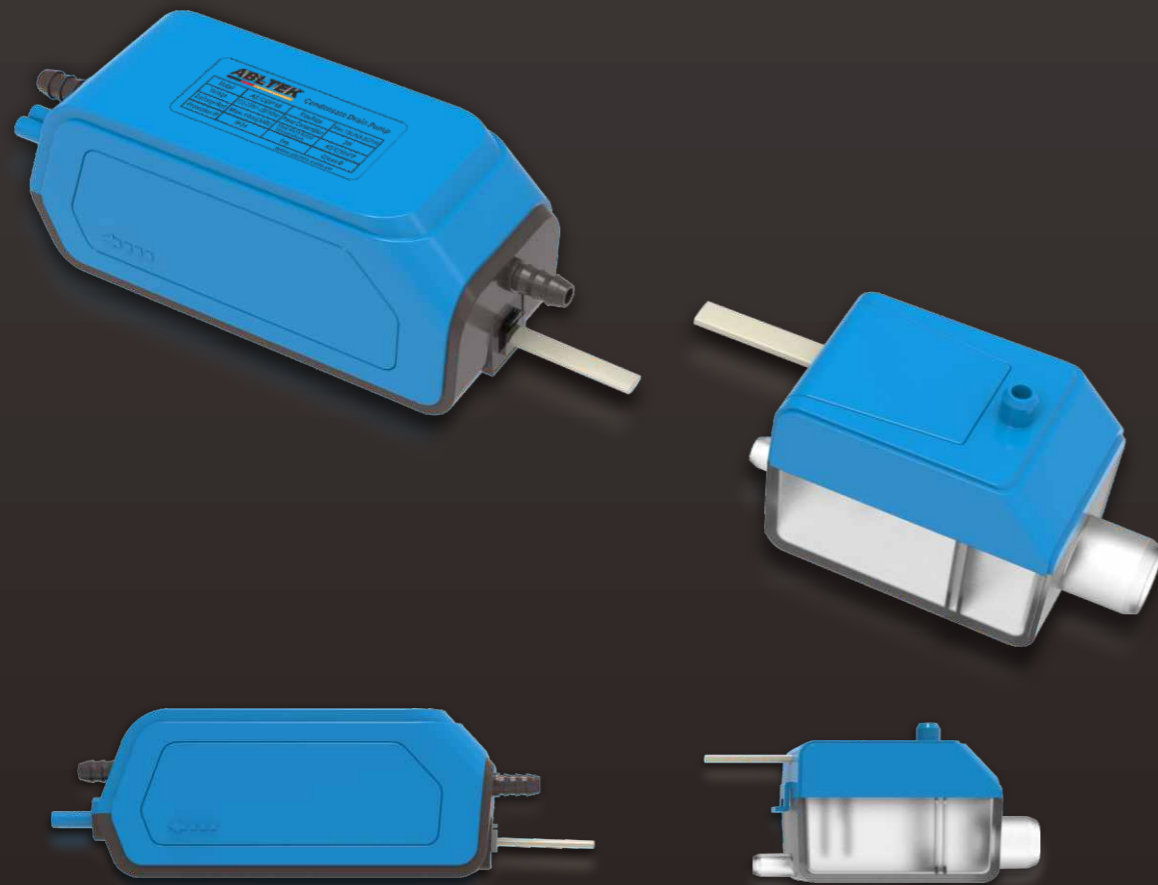
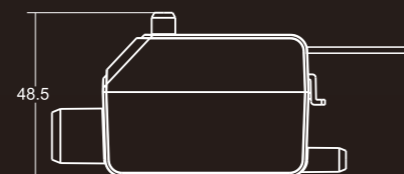
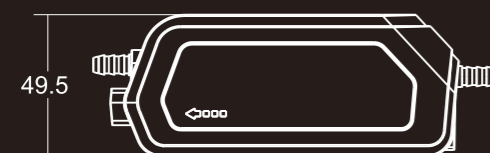
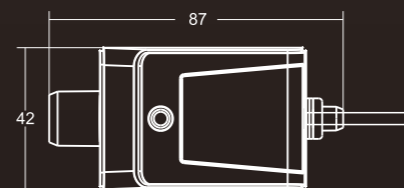


Mini Silent Condensate Drain Pump



AT/CDP18A

AT/CDP36A



→ Technical data

| MODEL | AT/CDP18A | AT/CDP36A |
|--------------------|--------------------|-------------------|
| Voltage | 100-230VAC/50-60HZ | |
| Discharge Head | Max.10m(33ft) | |
| Flow Rate | Max.18L/h(4.8GPH) | Max.36L/h(9.6GPH) |
| Tank Capacity | 35ML | |
| Mini Splites up to | 8KW(30000btu/hr) | 15KW(45000btu/hr) |
| Sound Level at 1m | 19dB(A) | 21dB(A) |
| Ambient temp | 0°C ~ 50°C | |
| Power Consumption | 3W | |

→ Suitability

Smaller commercial & Domestic units ner, windows and doors, kitchen, etc

→ Advantage

Ultra-quiet design
High head meets various application needs
Quick and convenient connection
Efficient water pump, strong power
Probe type control, higher reliability

The drain pump and the water storage tank are designed to be separated, and the 1.5m high-quality flexible cable is quickly plugged in, which is safe and reliable.

→ Flow Diagram

