



ANTARTIC Condensing Units

Technical brochure



Table of contents

1. General information.....	3
2. Nomenclature	3
3. Unit specification	4
3.1. Components	4
4. Technical data	5
5. Capacity tables.....	6
6. Drawings of units (mm).....	16
6.1. UZ04CRS0045M5X / UZ04CRS0030L5X / UZ04CRS0030L5X / UZ04CRCH045M5X / UZ04CRCH030L5X	16
6.2. UZ04CRS0070M5X	17
6.3. UZ04CRS0100M5X / UZ04CRS0100M5X / UZ04CRCH100M5X.....	18
6.4. UZ04CRS0210M5X	19
6.5. UZ04CRS0290M5X	20
6.6. UZ04CRS0390M5X	21
6.7. UZ04CRCV210M5X / UZ04CRCV100L5X.....	22
7. Refrigeration diagrams	23
7.1. UZ04CRS0045M5X / UZ04CRCH045M5X / UZ04CRS0070M5X	23
7.2. UZ04CRS0100M5X / UZ04CRS0100M5X / UZ04CRCH100M5X.....	23
7.3. UZ04CRS0210M5X	24
7.4. UZ04CRS0290M5X	24
7.5. UZ04CRS0390M5X	25
7.6. UZ04CRS0030L5X / UZ04CRS0030L5X / UZ04CRCH030L5X.....	25
7.7. UZ04CRS0100L5X	26
7.8. UZ04CRCV210M5X.....	26
7.9. UZ04CRCV100L5X.....	27
.....	27

1. General information

- ANTARTIC refrigeration condensing units are designed for automatic operation in cold rooms, refrigeration cabinets, liquid coolers and other equipment whose operating parameters meet the requirements of the unit's characteristics.
- These units are designed to work with refrigerants. The refrigerants allowed for specific units are listed in the table below. Filling or refilling these units with any other type of refrigerant may cause damage. The units must not be operated in conditions that exceed their operating parameters. Doing so may damage the unit and void the warranty.

Table of permitted refrigerants:

	UZ04CRS 0045M5X	UZ04CRS 0070M5X	UZ04CRS 0100M5X	UZ04CRS 0210M5X	UZ04CRS 0290M5X	UZ04CRS 0390M5X	UZ04CRS 0030L5X	UZ04CRS 0100L5X	UZ04CRC H045M5X	UZ04CRC H100M5X	UZ04CRC H030L5X	UZ04CRC V210M5X	UZ04CRC V100L5X
	✓	✓	✓	✓	✓	✓	✓	✓	✓	✓	✓	✓	✓
	✓	✓	✓	✓	✓	✓	✓	✓	✓	✓	✓	✓	See
	✓	✓	✓	✓	✓	✓	✓	✓	✓	✓	✓	✓	✓
	✓	✓	✓	✓	✓				✓	✓		✓	
			✓	✓	✓	✓				✓		✓	

2. Nomenclature

UZ04	CRS	0045	M5X
Condensing unit in housing equipped with an inverter compressor.	Type of equipment. <ul style="list-style-type: none"> • CRS = quiet • CRCH = high horizontal pressure • CRCV = high vertical pressure 	Approximate cooling capacity. 0045 = 4,5 kW	Temperature, <ul style="list-style-type: none"> • M = mean T • L = low T three-phase (5), refrigerant type (X = R-449A).

3. *Unit specification*

3.1. *Components*

- Hermetic inverter compressor either Panasonic, Avic or Panasonic compressor tandem (inverter + fixed speed) with crankcase resistor
- Refrigerated condenser
- EC fan speed controller
- Suction accumulator in the suction line
- Shut-off valve in suction line
- Suction pipe insulation
- Oil separator and check valve for each compressor
- Liquid container with shut-off valve at the outlet
- Safety valve
- Liquid line: filter drier, sight glass with moisture indicator, shut-off valve
- Service valves
- Pressure switch MHP/LP with automatic reset - compressor protection
- LP/MHP pressure switch - safety mode from the compressor
- Inverter: control of compressor efficiency
- Sound-insulated housing
- Suction transducer
- Fully equipped electrical panel
- Condenser protection grille
- Optional control

4. Technical data

Modelo de unidad condensadora				UZ04CRS0045M5X UZ04CRCH045M5X	UZ04CRS0070M5X	UZ04CRS0100M5X UZ04CRCH100M5X	UZ04CRS0210M5X	UZ04CRS0290M5X	UZ04CRS0290M5X	UZ04CRS0030L5X UZ04CRCH030L5X	UZ04CRS0100L5X	UZ04CRCV210M5X	UZ04CRCV100L5X	
Dimensiones	Longitud	A	[mm]	1106	1140	1289	1521	1528	1670	1106	1322	1327	1327	
	Altura	B	[mm]	560	760	963	1493	1488	1695	560	1493	1558	1558	
	Anchura	C	[mm]	466	439	439	475	879	1090	466	475	745	745	
Peso			[kg]	118	135	176	311	430	520	125	286	311	250	
Condensador	N° x f		[mm]	1x450	1x630	1x630	2x630	2x630	1x800	1x450	2x630	560	560	
	Caudal de aire		[m³/h]	3850	5496	6150	11150	12600	21000	3850	11150	9000	8500	
	Fuente de alimentación de ventilador		[V/ph/Hz]	200-240/1/50	200-240/1/50	200-277/1/50	200-277/1/50	200-277/1/50	380-480/3/50	200-277/1/50	200-277/1/50	230/1/50	230/1/50	
	Consumo del ventilador		[W]	170	230	230	2x230	2x230	1x950	170	2x230			
	Corriente nominal		[A]	1,4	1,2	1,2	2x1,2	2x1,2	3,3-26	1,4	2x1,2			
Compresor	Modelo			C-7RVN113L0A	C-7RVN153L0A	C-SBS180H00B	C-SBS180H00B / C-SBN453H8G	C-SBVN373L0B / C-SCN603H8T	4CC149NA04 / C-SCN753H8T	C-7RVN153L0A	C-SCVN603L0J	C-SBS180H00B / C-SBN453H8	C-SCVN603L0J	
	Desplazamiento			[m³/h]	2,5-7,5	1,7-10,4	5,8-17,4	5,8-17,4 / 17,4	7,7-24,6 / 23,6	10,7-39,3/36,2	1,7-10,4	10,0-37,6	5,8-17,4/17,4	10,0-37,6
	Frecuencia			[Hz]	Inv./30-160	Inv./30-180	Inv./30-90	Inv./30-90, 400/3/50	Inv./20-80 400/3/50	Inv./20-75 400/3/50	30-180	20-75	Inv./30-90, 400/3/50	Inv./25-70
	Corriente	MCC	[A]	12	12	16	27/13,8	17,5/13,8	31/26	12	24,6	16/13,8	15,1	
		LRA	[A]	-	-	-	6,3	- / 66	-	-	-	- / 66	-	
	Tipo de aceite				FV68S	FV68S	FV68S	FV68S	FV68S	FV68S	FV68S	FV32S	FV68S	FV32S
	Carga de aceite del compresor			[dm³]	0,7	0,7	2	2,0/1,7	2,0/2,8	2,8/2,8	0,7	2,5	2,0/1,7	2,5
	Resistencia de carter			[W]	40	40	70	2x70	2x90	2x90	40	2x90	2x70	1x90
Sonido @10 m			[dBa]	38	39	39,3	44	44	43	38	44			
Conexiones	Aspiración		[mm]	16	18	22	28	35	42	18	28	28	28	
	Líquido		[mm]	10	10	12	16	22	22	10	16	16	16	
Recipiente de líquido			[dm³]	3,9	7,1	10	15	15	30	3,9	15	15	15	
Fuente de alimentación	Tensión		[V/ph/Hz]	380-415/3/50	380-415/3/50	380-415/3/50	380-415/3/50	380-415/3/50	380-415/3/50	380-415/3/50	380-415/3/50	380-415/3/50	380-415/3/50	
	Cables recomendados			5x1,5mm2	5x2,5mm2	5x4mm2	5x6mm2	5x10mm2	5x10mm2	5x2,5mm2	5x4mm2	5x6mm2	5x4mm2	
	Protección mínima recomendada			B16	C16/B25	C25/B32	C40	C50	C50	C16/B25	C32	C40	B32	

5. Capacity tables

R404A

		Capacity (subcooling: 3 K, superheat: 10 K)												
Model	Range	T _e , °C	-15		-10		-5		0		5		10	
		T _{ar} , °C	Q, W	Pe, W	Q, W	Pe, W	Q, W	Pe, W	Q, W	Pe, W	Q, W	Pe, W	Q, W	Pe, W
UZ04CRS0045M5X UZ04CRCH045M5X UZ04CRCH045M5X	min	27	685	377	824	396	981	418	1.155	442	1.346	471	-	-
		32	672	398	812	421	969	446	1.141	475	1.329	508	-	-
		38	661	426	799	452	952	482	1.119	515	1.298	554	-	-
	max	43	648	451	782	480	929	513	1.088	550	1.257	593	-	-
		27	4.107	2.259	4.944	2.377	5.886	2.506	6.931	2.653	8.075	2.824	-	-
		32	4.034	2.389	4.873	2.525	5.812	2.675	6.848	2.847	7.973	3.048	-	-
UZ04CRS0070M5X UZ04CRS0070M5X UZ04CRS0070M5X	min	27	1.042	524	1.225	549	1.429	574	1.654	599	1.901	624	-	-
		32	973	612	1.160	634	1.367	656	1.595	679	1.845	701	-	-
		38	947	649	1.134	670	1.343	691	1.573	713	1.824	734	-	-
	max	43	929	677	1.117	697	1.326	718	1.556	739	1.808	760	-	-
		27	6.071	3.106	7.472	3.396	8.160	3.682	9.279	4.006	10.461	4.327	-	-
		32	5.898	3.391	7.215	3.662	7.901	3.935	8.964	4.248	10.077	4.565	-	-
UZ04CRS0100M5X UZ04CRS100M5X UZ04CRCH100M5X	min	38	5.748	3.659	6.957	3.926	7.625	4.202	8.605	4.521	9.621	4.852	-	-
		43	5.613	3.855	6.667	4.134	7.371	4.425	8.268	4.766	9.194	5.122	-	-
		27	2.527	2.833	3.216	2.701	4.080	2.604	5.146	2.505	6.439	2.495	7.978	2.495
	max	32	2.347	2.971	2.964	2.871	3.739	2.793	4.702	2.701	5.880	2.680	7.294	2.680
		38	2.142	3.151	2.681	3.094	3.357	3.045	4.204	2.970	5.250	2.938	6.519	2.938
		43	-	-	2.461	3.296	3.062	3.276	3.819	3.221	4.759	3.184	5.912	3.184
UZ04CRS0100M5X UZ04CRS100M5X UZ04CRCH100M5X	min	27	9.471	5.393	11.226	5.547	13.275	5.682	15.659	5.810	18.404	5.943	21.528	6.094
		32	8.608	5.879	10.226	6.038	12.122	6.184	14.340	6.328	16.910	6.480	19.851	6.657
		38	7.627	6.548	9.091	6.716	10.812	6.875	12.835	7.036	15.195	7.212	17.911	7.416
	max	43	6.854	7.182	8.198	7.357	9.777	7.526	11.640	7.702	13.823	7.896	16.346	8.123
		43	11.625	11.564	13.940	11.832	16.605	12.108	19.704	12.410	23.301	12.755	27.434	13.161
		27	2.581	3.034	3.302	2.889	4.212	2.778	5.347	2.701	6.735	2.655	8.407	2.637
UZ04CRS0210M5X UZ04CRS0210M5X UZ04CRS0210M5X	min	32	2.399	3.170	3.043	3.055	3.860	2.963	4.884	2.893	6.147	2.843	7.680	2.811
		38	2.190	3.346	2.754	3.273	3.467	3.208	4.366	3.151	5.487	3.102	6.860	3.057
		43	2.025	3.505	2.529	3.471	3.163	3.433	3.967	3.391	4.975	3.346	6.220	3.294
	max	27	19.052	10.485	22.353	10.786	26.151	11.107	30.509	11.468	35.466	11.885	41.043	12.382
		32	17.122	11.532	20.167	11.843	23.684	12.180	27.743	12.561	32.388	13.006	37.643	13.535
		38	14.947	12.992	17.704	13.312	20.896	13.662	24.600	14.062	28.868	14.532	33.723	15.093
UZ04CRS0290M5X UZ04CRS0290M5X UZ04CRS0290M5X	min	43	13.252	14.390	15.784	14.714	18.714	15.071	22.124	15.481	26.067	15.966	30.567	16.544
		27	4.733	2.041	5.836	2.018	7.186	1.998	8.826	1.981	10.794	1.968	13.121	1.960
		32	4.123	2.292	5.094	2.261	6.293	2.233	7.765	2.210	9.553	2.193	11.695	2.180
	max	38	3.464	2.708	4.295	2.658	5.328	2.613	6.615	2.574	8.202	2.542	10.132	2.516
		43	-	-	3.706	3.080	4.617	3.013	5.762	2.953	7.193	2.902	8.959	2.859
		27	27.594	12.716	32.251	13.216	37.527	13.778	43.508	14.415	50.258	15.138	57.829	15.959
UZ04CRS0390M5X UZ04CRS0390M5X UZ04CRS0390M5X	min	32	24.776	13.827	29.040	14.334	33.887	14.901	39.419	15.542	45.719	16.271	52.855	17.102
		38	21.621	15.336	25.471	15.848	29.847	16.416	34.875	17.059	40.658	17.790	47.291	18.627
		43	19.187	16.748	22.743	17.263	26.770	17.831	31.411	18.471	36.791	19.201	43.032	20.041
	max	27	9.630	4.166	12.006	4.232	14.921	4.306	18.444	4.389	22.628	4.480	27.505	4.580
		32	8.801	4.554	10.876	4.617	13.422	4.685	16.517	4.762	20.228	4.847	24.605	4.941
		38	7.835	5.096	9.623	5.149	11.794	5.208	14.438	5.274	17.636	5.348	21.455	5.430
max	43	7.055	5.611	8.666	5.654	10.584	5.701	12.907	5.755	15.725	5.816	19.122	5.885	
	27	36.630	17.612	43.734	18.461	51.920	19.409	61.229	20.468	71.663	21.645	83.202	22.948	
	32	33.454	19.158	39.854	20.017	47.233	20.970	55.668	22.029	65.202	23.205	75.847	24.505	
		38	29.808	21.248	35.516	22.118	42.051	23.072	49.536	24.126	58.057	25.292	67.676	26.582



Capacity (subcooling: 3 K, superheat: 10 K)														
Model	range	T _{ev} , °C	-15		-10		-5		0		5		10	
			T _{air} , °C	Q, W	Pe, W	Q, W	Pe, W	Q, W	Pe, W	Q, W	Pe, W	Q, W	Pe, W	Q, W
		43	26.905	23.192	32.172	24.072	38.120	25.027	44.906	26.074	52.656	27.227	61.475	28.503

R404A

Capacity (subcooling: 3 K, superheat: 10 K)														
Model	range	T _{ev} , °C	-40		-35		-30		-25		-20		-15	
			T _{air} , °C	Q, W	Pe, W	Q, W	Pe, W	Q, W	Pe, W	Q, W	Pe, W	Q, W	Pe, W	Q, W
UZ04CRS0030LSX UZ04CRC-H030LSX UZ04CRC-H030LSX	min	27	450	389	532	415	635	442	760	469	906	497	1.075	526
		32	366	488	452	512	559	536	688	560	838	584	1.010	609
		38	314	559	401	581	511	603	642	625	795	648	969	671
		43	296	593	384	615	493	637	624	659	777	681	951	703
	max	27	2.457	2.195	2.996	2.455	3.644	2.730	4.390	3.019	5.223	3.319	6.127	3.630
		32	2.353	2.549	2.916	2.773	3.574	3.016	4.317	3.276	5.130	3.554	5.997	3.853
		38	2.282	2.823	2.859	3.029	3.513	3.258	4.232	3.510	5.001	3.790	5.802	4.101
		43	2.206	2.975	2.783	3.183	3.419	3.419	4.103	3.685	4.819	3.985	-	-

R404A

Capacity (subcooling: 3 K, superheat: 10 K)														
Model	Range	T _{ev} , °C	-33		-30		-25		-20		-15		-10	
			T _{air} , °C	Q, W	Pe, W	Q, W	Pe, W	Q, W	Pe, W	Q, W	Pe, W	Q, W	Pe, W	Q, W
UZ04CRS0100LSX	min	27	2.189	3.136	2.541	3.231	3.275	3.347	4.243	5.499	5.510	3.281	7.102	3.026
		32	1.926	3.414	2.249	3.455	2.929	3.495	3.834	5.021	5.031	3.331	6.550	3.053
		38	1.639	3.880	1.928	3.856	2.543	3.804	3.375	4.481	4.490	3.523	5.922	3.217
		43	1.422	4.382	1.684	4.302	2.248	4.175	3.020	4.060	4.068	3.795	5.429	3.468
	max	27	8.200	8.304	9.309	8.678	11.548	9.347	14.240	10.065	17.331	10.823	20.759	11.610
		32	7.690	8.993	8.771	9.363	10.919	10.018	13.466	10.712	16.365	11.436	19.562	12.178
		38	7.104	9.928	8.154	10.286	10.195	10.909	12.571	11.561	15.245	12.230	18.172	12.907
		43	6.634	10.800	7.658	11.140	9.611	11.726	11.850	12.330	14.343	12.942	17.053	13.553

R404A

Capacity (subcooling: 3 K, superheat: 10 K)														
Model	range	T _{ev} , °C	-15		-10		-5		0		5		10	
			T _{air} , °C	Q, W	Pe, W	Q, W	Pe, W	Q, W	Pe, W	Q, W	Pe, W	Q, W	Pe, W	Q, W
UZ04CRCV210M5X	min	27	4 316	2 746	5 303	2 694	6 507	2 646	7 964	2 604	9 707	2 566	11 765	2 532
		32	3 951	2 933	4 847	2 893	5 942	2 854	7 276	2 817	8 883	2 780	10 793	2 745
		38	3 741	3 057	4 585	3 025	5 619	2 992	6 882	2 958	8 410	2 924	10 233	2 889
		43	3 538	3 189	4 333	3 167	5 308	3 140	6 502	3 111	7 952	3 079	9 690	3 044
	max	27	18 393	10 468	21 543	10 794	25 157	11 146	29 289	11 541	33 973	12 001	39 220	12 547
		32	16 496	11 537	19 400	11 874	22 743	12 241	26 587	12 657	30 968	13 144	35 901	13 721
		38	15 405	12 253	18 168	12 594	21 352	12 968	25 023	13 395	29 221	13 894	33 958	14 488
		43	14 351	13 026	16 976	13 372	20 003	13 751	23 501	14 186	27 511	14 696	32 045	15 302

R404A

Capacity (subcooling: 3 K, superheat: 10 K)										
Model	Range	T _{ev} , °C	-30		-25		-20		-15	
			T _{air} , °C	Q, W	Pe, W	Q, W	Pe, W	Q, W	Pe, W	Q, W

R448A

Model	Range	Capacity (subcooling: 3 K, superheat: 10 K)													
		T _{ev} , °C	-15		-10		-5		0		5		10		
		T _{air} , °C	Q, W	Pe, W	Q, W	Pe, W	Q, W	Pe, W	Q, W	Pe, W	Q, W	Pe, W	Q, W	Pe, W	
UZ04CRCV100L5X	min	27	-	-	-	-	4 325	3 169	5 544	3 071					
		32	2 375	3 260	3 051	3 297	3 942	3 266	5 097	3 128					
		38	2 072	3 668	2 689	3 614	3 512	3 513	4 592	3 328					
		43	1 843	4 122	2 413	3 992	3 181	3 833	4 199	3 609					
	max	27	9 810	8 593	12 025	9 275	14 639	10 003	17 575	10 766					
		32	9 383	9 301	11 517	9 968	13 991	10 670	16 733	11 396					
		38	8 915	10 256	10 956	10 891	13 264	11 547	15 774	12 213					
		43	8 565	11 143	10 531	11 739	12 702	12 344	15 019	12 948					
UZ04CRS0045M5X UZ04CRCH045M5X	min	27	658	362	791	380	942	401	1.109	424	1.292	452	-	-	
		32	645	382	780	404	930	428	1.095	456	1.276	488	-	-	
		38	635	409	767	434	914	463	1.074	494	1.246	532	-	-	
		43	622	433	751	461	892	492	1.044	528	1.207	569	-	-	
	max	27	4.212	2.251	4.927	2.349	5.766	2.456	6.746	2.576	7.878	2.712	-	-	
		32	4.089	2.355	4.802	2.472	5.617	2.596	6.559	2.734	7.635	2.888	-	-	
		38	3.955	2.489	4.651	2.627	5.425	2.773	6.297	2.930	7.277	3.101	-	-	
		43	3.764	2.667	4.620	2.818	5.385	2.984	6.253	3.167	7.220	3.368	-	-	
	UZ04CRS0070M5X	min	27	1.011	508	1.188	533	1.386	557	1.604	581	1.844	605	-	-
			32	944	594	1.125	615	1.326	636	1.547	659	1.790	680	-	-
			38	919	630	1.100	650	1.303	670	1.526	692	1.769	712	-	-
			43	901	657	1.083	676	1.286	696	1.509	717	1.754	737	-	-
max		27	6.226	3.095	7.447	3.357	7.993	3.609	9.031	3.890	10.205	4.156	-	-	
		32	5.979	3.343	7.109	3.585	7.636	3.819	8.586	4.080	9.650	4.325	-	-	
		38	5.734	3.562	6.754	3.800	7.245	4.032	8.073	4.286	8.989	4.526	-	-	
		43	5.433	3.801	6.569	4.047	7.124	4.294	7.920	4.577	8.804	4.852	-	-	
UZ04CRS0100M5X UZ04CRS100M5X UZ04CRCH100M5X		min	27	2.401	2.691	3.056	2.566	3.876	2.474	4.889	2.380	6.117	2.370	7.580	2.370
			32	2.230	2.823	2.816	2.727	3.552	2.654	4.467	2.566	5.586	2.546	6.930	2.546
			38	2.035	2.994	2.547	2.939	3.189	2.893	3.994	2.821	4.988	2.791	6.193	2.791
			43	-	-	2.338	3.131	2.909	3.112	3.628	3.060	4.522	3.025	5.616	3.025
	max	27	9.282	5.285	11.001	5.436	13.010	5.568	15.346	5.694	18.036	5.824	21.097	5.972	
		32	8.436	5.761	10.021	5.917	11.880	6.060	14.053	6.201	16.572	6.350	19.454	6.524	
		38	7.474	6.417	8.909	6.582	10.596	6.738	12.578	6.895	14.891	7.068	17.553	7.268	
		43	6.717	7.038	8.034	7.210	9.581	7.375	11.407	7.548	13.547	7.738	16.019	7.961	
	UZ04CRS0210M5X	min	27	2.452	2.882	3.137	2.744	4.002	2.639	5.079	2.566	6.399	2.522	7.986	2.505
			32	2.279	3.011	2.891	2.902	3.667	2.814	4.639	2.748	5.840	2.701	7.296	2.671
			38	2.081	3.179	2.616	3.109	3.293	3.048	4.148	2.994	5.213	2.947	6.517	2.904
			43	1.924	3.330	2.402	3.297	3.005	3.261	3.769	3.222	4.726	3.178	5.909	3.129
max		27	17.613	10.388	21.636	10.886	25.960	11.400	30.473	11.942	35.095	12.522	39.789	13.158	
		32	16.037	11.460	19.875	11.969	24.071	12.512	28.498	13.101	33.071	13.751	37.742	14.475	
		38	14.250	13.002	17.846	13.519	21.873	14.090	26.186	14.737	30.695	15.470	35.336	16.312	
		43	-	-	16.234	15.032	20.096	15.629	24.305	16.319	28.747	17.121	-	-	
UZ04CRS0290M5X		min	27	3.953	2.207	5.062	2.171	6.364	2.129	7.851	2.082	9.519	2.031	11.361	1.978
			32	3.524	2.442	4.538	2.399	5.739	2.354	7.122	2.307	8.682	2.258	10.412	2.208
			38	3.051	2.824	3.957	2.775	5.045	2.725	6.309	2.677	7.745	2.629	9.346	2.584
			43	2.694	3.229	3.516	3.174	4.514	3.121	5.684	3.071	7.021	3.024	8.519	2.983
	max	27	26.593	11.926	31.668	12.701	37.328	13.608	43.595	14.622	50.485	15.707	58.014	16.825	
		32	24.445	13.123	29.115	13.910	34.378	14.810	40.261	15.796	46.786	16.838	53.973	17.894	
		38	22.019	14.748	26.244	15.538	31.062	16.415	36.507	17.356	42.610	18.331	-	-	
		43	-	-	-	-	-	-	-	-	-	-	-	-	

R448A

		Capacity (subcooling: 3 K, superheat: 10 K)												
Model	range	T _e , °C	-15		-10		-5		0		5		10	
		T _{ar} , °C	Q, W	Pe, W	Q, W	Pe, W	Q, W	Pe, W	Q, W	Pe, W	Q, W	Pe, W	Q, W	Pe, W
UZ04CRS0390M5X	min	43	20.126	16.269	24.018	17.050	28.492	17.897	33.593	18.789	-	-	-	-
		27	5.261	3.204	6.071	3.099	7.135	2.987	8.514	2.867	10.267	2.739	-	-
		32	5.214	3.567	6.202	3.497	7.422	3.420	8.931	3.336	10.786	3.244	13.040	3.145
		38	4.987	4.089	6.121	4.049	7.459	4.004	9.055	3.953	10.961	3.894	13.228	3.828
		43	4.657	4.595	5.860	4.572	7.241	4.545	8.854	4.511	10.747	4.471	12.972	4.423
	max	27	35.384	16.854	42.808	17.647	51.592	18.564	61.831	19.629	73.567	20.863	86.799	22.289
		32	32.999	18.439	39.823	19.270	47.919	20.227	57.408	21.334	68.362	22.614	80.804	24.091
		38	30.255	20.571	36.449	21.450	43.792	22.455	52.440	23.610	62.496	24.941	74.014	26.473
		43	28.065	22.547	33.811	23.469	40.592	24.513	48.588	25.707	57.931	27.078	68.702	28.654

R448A

		Capacity (subcooling: 3 K, superheat: 10 K)												
Model	range	T _e , °C	-40		-35		-30		-25		-20		-15	
		T _{ar} , °C	Q, W	Pe, W	Q, W	Pe, W	Q, W	Pe, W	Q, W	Pe, W	Q, W	Pe, W	Q, W	Pe, W
UZ04CRS0030L5X UZ04CRCH030L5X UZ04CRCH030L5X	min	27	429	370	507	395	605	421	724	447	863	474	1.023	501
		32	349	465	430	487	532	510	655	533	798	557	962	580
		38	299	533	382	553	486	574	611	596	757	617	923	639
		43	282	565	365	585	470	606	595	627	740	648	906	670
	max	27	2.340	2.090	2.853	2.338	3.470	2.600	4.181	2.875	4.975	3.161	5.835	3.457
		32	2.241	2.427	2.777	2.641	3.404	2.872	4.111	3.120	4.886	3.385	5.712	3.670
		38	2.174	2.689	2.723	2.885	3.346	3.102	4.030	3.343	4.763	3.609	5.526	3.905
		43	2.101	2.834	2.650	3.032	3.257	3.256	3.908	3.509	4.589	3.795	-	-

R448A

		Capacity (subcooling: 3 K, superheat: 10 K)												
Model	range	T _e , °C	-33		-30		-25		-20		-15		-10	
		T _{ar} , °C	Q, W	Pe, W	Q, W	Pe, W	Q, W	Pe, W	Q, W	Pe, W	Q, W	Pe, W	Q, W	Pe, W
UZ04CRS0100L5X	min	27	2.080	2.979	2.414	3.069	3.111	3.180	4.031	3.207	5.224	3.117	6.747	2.875
		32	1.830	3.243	2.137	3.282	2.783	3.320	3.642	3.294	4.770	3.164	6.223	2.900
		38	1.557	3.686	1.832	3.663	2.416	3.614	3.206	3.521	4.257	3.347	5.626	3.056
		43	1.351	4.163	1.600	4.087	2.136	3.966	2.869	3.818	3.857	3.605	5.158	3.295
	max	27	7.790	7.889	8.844	8.244	10.971	8.880	13.528	9.562	16.464	10.282	19.721	11.030
		32	7.306	8.543	8.332	8.895	10.373	9.517	12.793	10.176	15.547	10.864	18.584	11.569
		38	6.749	9.432	7.746	9.772	9.685	10.364	11.942	10.983	14.483	11.619	17.263	12.262
		43	6.302	10.260	7.275	10.583	9.130	11.140	11.258	11.714	13.626	12.295	16.200	12.875

R448A

		Capacity (subcooling: 3 K, superheat: 10 K)												
Model	Range	T _e , °C	-15		-10		-5		0		5		10	
		T _{ar} , °C	Q, W	Pe, W	Q, W	Pe, W	Q, W	Pe, W	Q, W	Pe, W	Q, W	Pe, W	Q, W	Pe, W
UZ04CRCV210M5X	min	27	4213	2831	5035	2794	6100	2753	7410	2706	8954	2656	10714	2605
		32	3688	3104	4550	3064	5637	3022	6941	2979	8455	2936	10159	2896
		38	3409	3292	4282	3247	5377	3205	6685	3167	8190	3133	9875	3104
		43	3146	3488	4029	3440	5109	3408	6404	3371	7886	3343	9539	3323
	max	27	19278	10962	22772	11289	26531	11613	30542	11950	34801	12320	39312	12739



max	32	17320	12052	20563	12382	24120	12733	27958	13113	32063	13546	36428	14047
	38	16206	12823	19273	13143	22726	13509	26505	13926	30571	14416	34905	14996
	43	15097	13632	18009	13955	21273	14370	24953	14814	28943	15348	33212	15991

R449A

		Capacity (subcooling: 3 K, superheat: 10 K)													
Model	Range	T _e , °C	-15		-10		-5		0		5		10		
		T _{air} , °C	Q, W	Pe, W	Q, W	Pe, W	Q, W	Pe, W	Q, W	Pe, W	Q, W	Pe, W	Q, W	Pe, W	
UZ04CRS0045M5X UZ04CRCH045M5X UZ04CRCH045M5X	min	27	651	358	783	376	932	397	1.097	420	1.279	447	-	-	
		32	638	378	771	400	921	424	1.084	451	1.263	483	-	-	
		38	628	405	759	429	904	458	1.063	489	1.233	526	-	-	
		43	616	428	743	456	883	487	1.034	523	1.194	563	-	-	
	max	27	4.065	2.234	4.693	2.299	5.698	2.454	6.829	2.638	8.080	2.864	-	-	
		32	3.871	2.320	4.666	2.474	5.670	2.650	6.799	2.861	8.042	3.122	-	-	
		38	3.790	2.510	4.652	2.687	5.645	2.891	6.754	3.136	7.968	3.434	-	-	
		43	3.778	2.719	4.626	2.866	5.600	3.095	6.680	3.366	7.850	3.695	-	-	
	UZ04CRS0070M5X	min	27	1.016	527	1.229	556	1.458	586	1.699	617	1.948	651	-	-
			32	960	621	1.176	648	1.414	677	1.665	707	1.927	741	-	-
			38	931	695	1.150	721	1.395	749	1.658	780	1.934	815	-	-
			43	923	726	1.146	762	1.396	791	1.668	824	1.957	862	-	-
max		27	6.454	3.223	7.323	3.451	8.579	3.787	9.835	4.143	11.061	4.524	-	-	
		32	6.030	3.451	7.216	3.754	8.453	4.082	9.690	4.440	10.895	4.839	-	-	
		38	6.004	3.770	7.143	4.069	8.344	4.407	9.549	4.789	10.719	5.226	-	-	
		43	5.971	3.949	7.076	4.325	8.237	4.686	9.409	5.104	10.544	5.591	-	-	
UZ04CRS0100M5X UZ04CRS100M5X UZ04CRCH100M5X		min	27	2.408	2.625	3.008	2.573	3.750	2.526	4.663	2.486	5.772	2.454	7.094	2.432
			32	2.223	2.846	2.777	2.790	3.455	2.739	4.291	2.695	5.311	2.659	6.536	2.632
			38	2.004	3.137	2.513	3.077	3.125	3.022	3.876	2.973	4.797	2.932	5.912	2.901
			43	-	-	2.304	3.340	2.870	3.282	3.559	3.229	4.404	3.185	5.431	3.150
	max	27	8.811	5.168	10.656	5.366	12.850	5.564	15.429	5.778	18.416	6.028	21.823	6.337	
		32	8.088	5.708	9.791	5.915	11.826	6.126	14.237	6.360	17.056	6.637	20.302	6.982	
		38	7.268	6.428	8.827	6.648	10.691	6.878	12.916	7.139	15.545	7.451	18.606	7.843	
		43	-	-	8.087	7.325	9.827	7.575	11.911	7.861	14.391	8.206	17.304	8.640	
	UZ04CRS0210M5X	min	27	2.468	2.799	3.093	2.740	3.874	2.686	4.845	2.636	6.035	2.592	7.466	2.556
			32	2.282	3.013	2.858	2.950	3.570	2.892	4.456	2.837	5.548	2.789	6.870	2.748
			38	2.063	3.295	2.589	3.229	3.231	3.166	4.025	3.107	5.007	3.054	6.206	3.007
			43	1.884	3.552	2.378	3.484	2.968	3.417	3.695	3.355	4.593	3.298	5.697	3.248
max		27	16.765	9.927	20.459	10.416	24.721	10.952	29.544	11.556	34.912	12.250	40.803	13.060	
		32	15.237	11.018	18.712	11.529	22.737	12.094	27.315	12.736	32.440	13.477	38.100	14.345	
		38	13.509	12.523	16.747	13.058	20.507	13.656	24.804	14.340	29.646	15.135	35.031	16.069	
		43	-	-	15.222	14.507	18.778	15.131	22.852	15.848	27.461	16.684	-	-	
UZ04CRS0290M5X		min	27	3.708	2.028	4.626	2.009	5.770	1.981	7.174	1.946	8.867	1.906	10.870	1.864
			32	3.429	2.345	4.262	2.317	5.303	2.283	6.589	2.246	8.152	2.208	10.017	2.171
			38	3.112	2.788	3.856	2.749	4.786	2.708	5.943	2.668	7.361	2.631	9.069	2.600
			43	-	-	3.544	3.163	4.393	3.115	5.452	3.072	6.758	3.036	8.344	3.008
	max	27	24.936	11.972	30.025	12.698	35.750	13.497	42.134	14.378	49.194	15.349	56.953	16.420	
		32	22.887	13.206	27.511	13.930	32.797	14.731	38.779	15.618	45.486	16.601	52.950	17.691	
		38	20.584	14.852	24.718	15.571	29.532	16.370	35.076	17.262	41.395	18.257	48.536	19.368	
		43	-	-	22.584	17.081	27.056	17.878	32.275	18.771	38.301	19.774	45.201	20.904	
	UZ04CRS0390M5X	min	27	5.066	2.932	6.920	3.057	9.361	3.310	12.263	3.613	15.504	3.890	-	-
			32	5.012	3.428	6.486	3.471	8.440	3.604	10.769	3.753	13.369	3.848	16.147	3.819
			38	4.759	4.049	5.935	4.041	7.450	4.070	9.218	4.070	11.155	3.974	13.183	3.719
			43	4.396	4.588	5.453	4.576	6.724	4.555	8.134	4.462	9.611	4.233	11.088	3.809
max		27	35.264	16.875	42.673	17.668	51.440	18.586	61.663	19.651	73.384	20.886	86.604	22.314	
		32	32.882	18.461	39.693	19.293	47.773	20.251	57.247	21.359	68.187	22.640	80.619	24.118	
		38	30.143	20.596	36.325	21.476	43.654	22.481	52.288	23.638	62.333	24.970	73.843	26.505	
		43	27.957	22.576	33.692	23.498	40.460	24.543	48.445	25.738	57.779	27.111	68.544	28.689	

R449A

		Capacity (subcooling: 3 K, superheat: 10 K)													
Model	range	T _{ev} °C	-40		-35		-30		-25		-20		-15		
		T _{br} °C	Q, W	Pe, W	Q, W	Pe, W	Q, W	Pe, W	Q, W	Pe, W	Q, W	Pe, W	Q, W	Pe, W	
UZ04CRS0030L5X UZ04CRH030L5X UZ04CRC030L5X	min	27	437	378	517	403	617	429	738	456	881	483	1.044	511	
		32	356	474	439	497	543	520	668	544	814	568	981	592	
		38	305	543	390	565	496	586	623	608	772	629	942	651	
		43	287	576	373	597	479	618	606	640	755	661	924	683	
	max	27	2.387	2.132	2.911	2.385	3.540	2.652	4.265	2.933	5.074	3.224	5.952	3.526	
		32	2.286	2.476	2.833	2.694	3.472	2.930	4.194	3.182	4.984	3.452	5.826	3.743	
		38	2.217	2.743	2.778	2.943	3.413	3.165	4.111	3.410	4.858	3.682	5.637	3.984	
		43	2.143	2.890	2.703	3.092	3.322	3.321	3.986	3.579	4.681	3.871	-	-	

R449A

		Capacity (subcooling: 3 K, superheat: 10 K)													
Model	range	T _{ev} °C	-33		-30		-25		-20		-15		-10		
		T _{br} °C	Q, W	Pe, W	Q, W	Pe, W	Q, W	Pe, W	Q, W	Pe, W	Q, W	Pe, W	Q, W	Pe, W	
UZ04CRS0100L5X	min	27	3.589	3.558	3.772	3.522	3.850	3.278	3.897	2.893	4.208	2.476	5.083	2.148	
		32	3.207	3.779	3.406	3.724	3.505	3.468	3.561	3.106	3.869	2.748	4.725	2.509	
		38	2.745	4.222	2.961	4.105	3.079	3.775	3.140	3.382	3.437	3.034	4.266	2.841	
		43	2.358	4.744	2.584	4.542	2.714	4.098	2.775	3.628	3.058	3.240	3.859	3.035	
	max	27	8.448	7.962	9.542	8.326	11.730	8.975	14.319	9.669	17.235	10.396	20.398	11.143	
		32	7.988	8.630	9.060	8.990	11.162	9.625	13.609	10.294	16.333	10.985	19.264	11.685	
		38	7.468	9.537	8.517	9.885	10.522	10.490	12.803	11.116	15.303	11.750	17.960	12.382	
		43	7.061	10.382	8.094	10.715	10.022	11.284	12.171	11.863	14.488	12.439	16.921	13.003	

R449A

		Capacity (subcooling: 3 K, superheat: 10 K)													
Model	Range	T _{ev} °C	-15		-10		-5		0		5		10		
		T _{br} °C	Q, W	Pe, W	Q, W	Pe, W	Q, W	Pe, W	Q, W	Pe, W	Q, W	Pe, W	Q, W	Pe, W	
UZ04CRCV210M5X	min	27	4 020	2 703	4 763	2 672	5 784	2 642	7 106	2 613	8 741	2 587	10 689	2 566	
		32	3 513	2 971	4 293	2 938	5 315	2 905	6 601	2 875	8 166	2 849	10 012	2 829	
		38	3 240	3 146	4 036	3 111	5 052	3 077	6 311	3 046	7 828	3 020	9 607	2 999	
		43	2 990	3 333	3 798	3 296	4 804	3 261	6 031	3 228	7 496	3 201	9 204	3 180	
	max	27	18 393	10 468	21 543	10 794	25 157	11 146	29 289	11 541	33 973	12 001	39 220	12 547	
		32	16 496	11 537	19 400	11 874	22 743	12 241	26 587	12 657	30 968	13 144	35 901	13 721	
		38	15 405	12 253	18 168	12 594	21 352	12 968	25 023	13 395	29 221	13 894	33 958	14 488	
		43	14 351	13 026	16 976	13 372	20 003	13 751	23 501	14 186	27 511	14 696	32 045	15 302	

R449A

		Capacity (subcooling: 3 K, superheat: 10 K)									
Model	Range	T _{ev} °C	-30		-25		-20		-15		
		T _{br} °C	Q, W	Pe, W	Q, W	Pe, W	Q, W	Pe, W	Q, W	Pe, W	
UZ04CRCV100L5 X	min	27	3 750	3 320	3 814	3 076	3 845	2 693	4 137	2 278	
		32	3 409	3 528	3 491	3 270	3 530	2 907	3 816	2 550	
		38	2 990	3 917	3 090	3 581	3 131	3 184	3 406	2 835	
		43	2 633	4 363	2 743	3 908	2 782	3 431	3 044	3 039	



R134a

Model	Range	Capacity (subcooling: 3 K, superheat: 10 K)													
		T _e , °C	-15		-10		-5		0		5		10		
		T _{ar} , °C	Q _o , W	Pe, W	Q _o , W	Pe, W	Q _o , W	Pe, W	Q _o , W	Pe, W	Q _o , W	Pe, W	Q _o , W	Pe, W	
	max	27	9 548	8 210	11 688	8 870	14 193	9 573	16 980	10 306					
		32	9 144	8 892	11 204	9 537	13 571	10 214	16 168	10 909					
		38	8 701	9 812	10 673	10 427	12 879	11 058	15 248	11 693					
		43	8 368	10 667	10 272	11 245	12 347	11 827	14 530	12 399					
UZ04CRS0045M5X UZ04CRCH045M5X UZ04CRCH045M5X	min	27	-	-	500	321	595	343	695	366	806	388	932	409	
		32	-	-	480	399	570	423	665	450	769	478	890	504	
		38	-	-	456	450	539	480	627	515	726	551	840	587	
		43	-	-	436	470	514	508	597	550	691	596	800	643	
	max	27	-	-	3.563	1.287	4.213	1.344	4.890	1.416	5.632	1.491	6.478	1.554	
		32	-	-	3.371	1.450	3.978	1.498	4.619	1.562	5.330	1.627	6.151	1.680	
		38	-	-	3.116	1.589	3.680	1.639	4.282	1.703	4.963	1.768	5.758	1.822	
		43	-	-	2.898	1.695	3.428	1.753	4.003	1.825	4.661	1.898	5.438	1.961	
	UZ04CRS0070M5X	min	27	-	-	861	407	1.031	410	1.210	417	1.407	426	1.634	434
			32	-	-	831	483	990	486	1.159	493	1.347	502	1.564	508
			38	-	-	782	543	929	547	1.087	556	1.264	564	1.471	570
			43	-	-	735	577	873	584	1.021	593	1.190	602	1.389	607
max		27	-	-	4.329	1.643	5.145	1.709	5.998	1.799	6.935	1.896	8.002	1.979	
		32	-	-	4.110	1.919	4.874	1.975	5.681	2.053	6.578	2.134	7.610	2.199	
		38	-	-	3.812	2.144	4.519	2.200	5.277	2.276	6.132	2.352	7.129	2.409	
		43	-	-	3.549	2.295	4.214	2.360	4.935	2.442	5.759	2.523	6.731	2.583	
UZ04CRS0100M5X UZ04CRS100M5X UZ04CRCH100M5X	min	27	1.758	2.662	2.216	2.649	2.793	2.628	3.524	2.600	4.440	2.566	5.574	2.526	
		32	1.636	2.810	2.066	2.791	2.607	2.767	3.296	2.738	4.163	2.706	5.240	2.672	
		38	-	-	1.895	2.978	2.397	2.950	3.037	2.921	3.847	2.892	4.859	2.863	
		43	-	-	-	-	2.231	3.116	2.834	3.087	3.598	3.061	4.558	3.037	
	max	27	5.295	2.950	6.508	3.062	7.985	3.159	9.782	3.249	11.942	3.340	14.502	3.439	
		32	5.006	3.219	6.157	3.336	7.551	3.442	9.246	3.543	11.290	3.649	13.721	3.767	
		38	4.663	3.589	5.747	3.715	7.049	3.832	8.629	3.949	10.539	4.073	12.817	4.216	
		43	4.381	3.937	5.415	4.072	6.646	4.201	8.137	4.331	9.938	4.473	12.094	4.637	
UZ04CRS0210M5X	min	27	1.877	3.086	2.368	3.070	2.990	3.045	3.780	3.011	4.775	2.968	6.009	2.916	
		32	1.747	3.239	2.209	3.217	2.792	3.188	3.535	3.153	4.475	3.112	5.647	3.066	
		38	1.598	3.438	2.027	3.409	2.568	3.377	3.258	3.341	4.136	3.303	5.235	3.262	
		43	-	-	-	-	2.391	3.548	3.041	3.512	3.868	3.477	4.910	3.441	
	max	27	11.692	5.670	14.061	5.901	16.892	6.107	19.072	6.304	24.293	6.507	28.997	6.737	
		32	10.909	6.190	13.163	6.428	15.853	6.650	17.690	6.870	22.899	7.106	27.395	7.378	
		38	-	-	12.144	7.164	14.668	7.405	16.593	7.654	21.292	7.928	25.540	8.250	
		43	-	-	11.344	7.866	13.733	8.123	19.072	8.396	20.009	8.704	24.049	9.068	
UZ04CRS0250M5X	min	27	2.935	1.091	3.504	1.125	4.184	1.150	4.997	1.166	5.961	1.176	7.094	1.180	
		32	2.699	1.184	3.242	1.218	3.893	1.244	4.673	1.263	5.603	1.277	6.700	1.288	
		38	2.439	1.319	2.951	1.351	3.565	1.378	4.306	1.400	5.193	1.420	6.247	1.439	
		43	2.242	1.450	2.727	1.481	3.311	1.508	4.018	1.533	4.869	1.558	5.887	1.583	
	max	27	17.749	6.996	21.067	7.281	24.995	7.527	29.646	7.750	35.124	7.970	41.512	8.209	
		32	16.372	7.659	19.540	7.945	23.297	8.206	27.760	8.458	33.032	8.719	39.204	9.014	
		38	14.852	8.602	17.835	8.887	21.381	9.162	25.610	9.444	30.630	9.754	36.535	10.115	
		43	-	-	16.522	9.795	19.887	10.081	23.915	10.386	28.719	10.733	34.395	11.147	
UZ04CRS0390 M5X	min	27	3.018	2.135	3.783	2.113	4.724	2.092	5.898	2.072	7.356	2.054	-	-	
		32	2.762	2.220	3.458	2.198	4.312	2.177	5.380	2.157	6.716	2.139	8.372	2.123	
		38	2.469	2.396	3.092	2.372	3.850	2.350	4.801	2.329	5.999	2.311	7.497	2.295	
		43	2.238	2.605	2.807	2.579	3.494	2.554	4.354	2.532	5.444	2.512	6.818	2.495	

R134a

Capacity (subcooling: 3 K, superheat: 10 K)														
Model	Range	T _e , °C	-15		-10		-5		0		5		10	
			T _{air} , °C	Q, W	Pe, W	Q, W	Pe, W	Q, W	Pe, W	Q, W	Pe, W	Q, W	Pe, W	Q, W
	max	27	20.909	7.885	25.626	8.185	31.112	8.491	37.453	8.812	44.723	9.156	52.978	9.535
		32	19.566	8.456	23.913	8.774	29.014	9.103	34.962	9.452	41.835	9.830	49.698	10.249
		38	18.023	9.259	21.960	9.601	26.629	9.959	32.129	10.343	38.549	10.764	45.959	11.233
		43	16.794	10.030	20.418	10.393	24.752	10.777	29.902	11.192	35.962	11.649	43.011	12.162

R134a

Capacity (Subcooling: 3 K, Superheat: 10 K)														
Model	Range	T _e , °C	-15		-10		-5		0		5		10	
			T _{air} , °C	Q, W	Pe, W	Q, W	Pe, W	Q, W	Pe, W	Q, W	Pe, W	Q, W	Pe, W	Q, W
UZ04CRCV210M5X	min	27	1 396	2 113	1 762	2 101	2 224	2 083	2 812	2 057	3 551	2 025	4 469	1 987
		32	1 299	2 228	1 642	2 212	2 076	2 190	2 629	2 165	3 327	2 134	4 198	2 100
		38	1 242	2 301	1 573	2 282	1 990	2 260	2 523	2 234	3 198	2 204	4 041	2 172
		43	1 187	2 378	1 506	2 357	1 908	2 332	2 421	2 306	3 072	2 278	3 889	2 248
	max	27	11 479	5 521	13 793	5 762	16 554	5 983	19 849	6 197	23 746	6 423	28 300	6 685
		32	10 702	6 050	12 905	6 300	15 527	6 536	18 658	6 775	22 371	7 036	26 721	7 340
		38	10 256	6 404	12 392	6 659	14 932	6 906	17 966	7 160	21 568	7 441	25 797	7 771
		43	9 823	6 787	11 895	7 048	14 354	7 304	17 291	7 573	20 783	7 874	24 890	8 230

R513A

Capacity (Subcooling: 3 K, Superheat: 10 K)														
Model	Range	T _e , °C	-15		-10		-5		0		5		10	
			T _{air} , °C	Q, W	Pe, W	Q, W	Pe, W	Q, W	Pe, W	Q, W	Pe, W	Q, W	Pe, W	Q, W
UZ04CRS0045M5X UZ04CRC0045M5X UZ04CRC045M5X	min	27	-	-	600	385	714	412	834	439	967	466	1.118	491
		32	-	-	576	479	684	508	798	540	923	574	1.068	605
		38	-	-	547	540	647	576	752	618	871	661	1.008	704
		43	-	-	523	564	617	610	716	660	829	715	960	772
	max	27	-	-	4.276	1.544	5.056	1.613	5.868	1.700	6.759	1.789	7.773	1.865
		32	-	-	4.045	1.739	4.774	1.798	5.543	1.874	6.397	1.952	7.381	2.016
		38	-	-	3.740	1.907	4.416	1.967	5.139	2.044	5.955	2.122	6.909	2.186
		43	-	-	3.478	2.033	4.114	2.104	4.804	2.190	5.593	2.277	6.526	2.353
UZ04CRS0070M5X	min	27	-	-	1.033	488	1.237	492	1.452	500	1.688	511	1.961	521
		32	-	-	997	580	1.188	583	1.391	592	1.616	602	1.877	610
		38	-	-	938	652	1.115	656	1.304	667	1.517	677	1.765	684
		43	-	-	882	692	1.048	701	1.225	712	1.428	722	1.667	728
	max	27	-	-	5.194	1.971	6.174	2.051	7.198	2.159	8.322	2.275	9.602	2.374
		32	-	-	4.932	2.303	5.848	2.370	6.817	2.464	7.893	2.561	9.132	2.639
		38	-	-	4.574	2.572	5.423	2.641	6.332	2.731	7.358	2.822	8.555	2.890
		43	-	-	4.259	2.754	5.057	2.832	5.922	2.931	6.911	3.027	8.077	3.100
UZ04CRS0100M5X UZ04CRS100M5X UZ04CRH100M5X	min	27	2.031	1.052	2.518	1.062	3.107	1.062	3.828	1.054	4.708	1.038	5.772	1.016
		32	1.864	1.132	2.314	1.139	2.858	1.137	3.526	1.129	4.348	1.113	5.348	1.093
		38	1.672	1.269	2.082	1.271	2.576	1.267	3.185	1.256	3.940	1.241	4.867	1.222
		43	1.519	1.417	1.900	1.416	2.356	1.408	2.919	1.396	3.621	1.380	4.490	1.361
	max	27	5.616	3.264	7.062	3.353	8.821	3.450	10.871	3.554	13.191	3.664	15.760	3.779

R513A

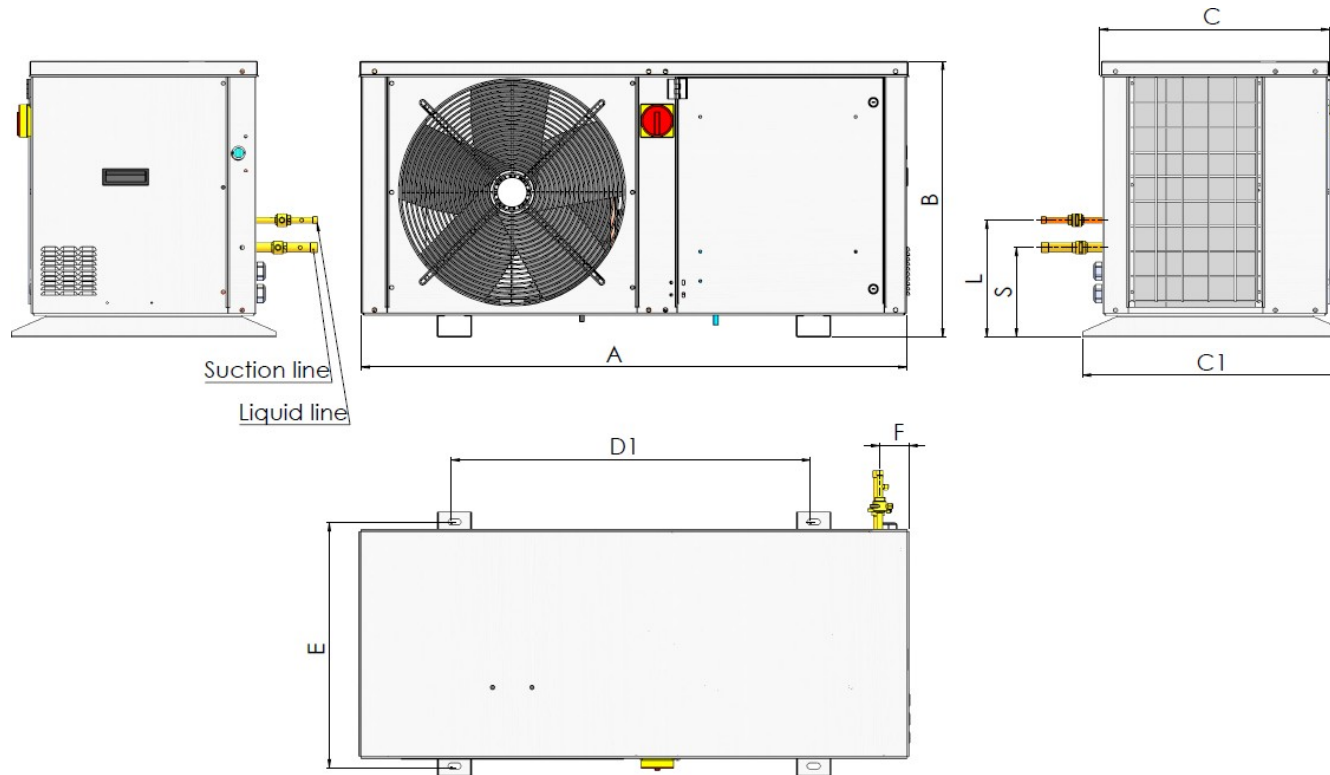
		Capacity (subcooling: 3 K, superheat: 10 K)												
Model	Range	T _e , °C	-15		-10		-5		0		5		10	
		T _a , °C	Q, W	Pe, W	Q, W	Pe, W	Q, W	Pe, W	Q, W	Pe, W	Q, W	Pe, W	Q, W	Pe, W
		32	5.236	3.523	6.560	3.624	8.195	3.731	10.124	3.846	12.327	3.966	14.784	4.091
		38	4.798	3.889	5.983	4.003	7.477	4.124	9.266	4.251	11.333	4.383	13.662	4.519
		43	4.447	4.241	5.524	4.367	6.907	4.498	8.584	4.635	10.543	4.777	12.769	4.923
UZ04CRS0210M5X	min	27	2.064	1.280	2.565	1.288	3.175	1.287	3.925	1.277	4.847	1.257	5.966	1.230
		32	1.894	1.355	2.357	1.360	2.919	1.356	3.614	1.343	4.472	1.324	5.523	1.297
		38	1.700	1.485	2.121	1.485	2.631	1.477	3.263	1.463	4.050	1.442	5.021	1.415
		43	-	-	1.936	1.624	2.406	1.612	2.990	1.595	3.721	1.572	4.629	1.545
	max	27	10.765	6.104	13.550	6.243	16.941	6.425	20.889	6.649	25.348	6.910	30.274	7.203
		32	10.098	6.593	12.622	6.762	15.756	6.970	19.457	7.219	23.685	7.502	28.399	7.816
		38	9.323	7.294	11.551	7.495	14.392	7.735	17.810	8.011	21.770	8.320	26.239	8.659
		43	8.697	7.974	10.696	8.203	13.306	8.467	16.498	8.765	20.244	9.096	24.517	9.455
UZ04CRS0290M5X	min	27	2.532	1.417	3.252	1.392	4.100	1.363	5.073	1.330	6.168	1.294	7.383	1.253
		32	2.257	1.553	2.913	1.525	3.694	1.494	4.596	1.461	5.618	1.425	6.756	1.386
		38	1.954	1.779	2.539	1.746	3.244	1.712	4.067	1.677	5.004	1.642	6.055	1.606
		43	1.724	2.019	2.255	1.982	2.901	1.946	3.661	1.910	4.532	1.874	5.513	1.840
	max	27	16.849	6.951	20.801	7.285	25.436	7.630	30.759	7.993	36.767	8.376	43.448	8.783
		32	15.647	7.572	19.215	7.919	23.457	8.280	28.384	8.659	34.001	9.060	40.303	9.488
		38	14.285	8.435	17.425	8.799	21.220	9.176	25.695	9.573	30.860	9.993	36.720	10.442
		43	13.216	9.258	16.028	9.633	19.476	10.023	23.592	10.433	28.396	10.867	33.900	11.332
UZ04CRS0390M5X	min	27	3.621	2.562	4.540	2.536	5.669	2.511	7.077	2.487	8.827	2.464	-	-
		32	3.314	2.664	4.149	2.637	5.174	2.612	6.455	2.589	8.059	2.567	10.047	2.548
		38	2.963	2.875	3.710	2.847	4.620	2.820	5.761	2.795	7.198	2.773	8.997	2.754
		43	2.686	3.126	3.369	3.095	4.192	3.065	5.225	3.038	6.533	3.014	8.182	2.994
	max	27	25.091	9.462	30.751	9.822	37.334	10.189	44.944	10.574	53.667	10.987	63.573	11.441
		32	23.479	10.147	28.695	10.528	34.817	10.923	41.955	11.342	50.202	11.796	59.638	12.299
		38	21.627	11.111	26.352	11.521	31.954	11.951	38.555	12.412	46.259	12.917	55.151	13.480
		43	20.153	12.037	24.502	12.472	29.702	12.932	35.882	13.430	43.154	13.979	51.613	14.594
UZ04CRCV210M5X	min	27	2.383	1.398	3.165	1.400	4.090	1.396	5.177	1.386	6.440	1.371	7.894	1.349
		32	2.261	1.498	2.960	1.500	3.800	1.496	4.799	1.486	5.974	1.471	7.342	1.450
		38	2.189	1.573	2.841	1.575	3.632	1.570	4.581	1.561	5.706	1.545	7.022	1.525
		43	2.118	1.660	2.726	1.661	3.469	1.656	4.369	1.646	5.445	1.631	6.713	1.612
	max	27	10.574	5.943	13.282	6.095	16.576	6.292	20.405	6.534	24.722	6.815	29.483	7.131
		32	9.908	6.441	12.360	6.622	15.402	6.847	18.990	7.113	23.081	7.419	27.637	7.758
		38	9.517	6.781	11.821	6.979	14.718	7.219	18.165	7.501	22.125	7.820	26.560	8.172
		43	9.132	7.152	11.295	7.367	14.049	7.623	17.360	7.918	21.190	8.251	25.506	8.615

Te - temperatur de evaporación, °C

Ta - temperatura ambiente, °C

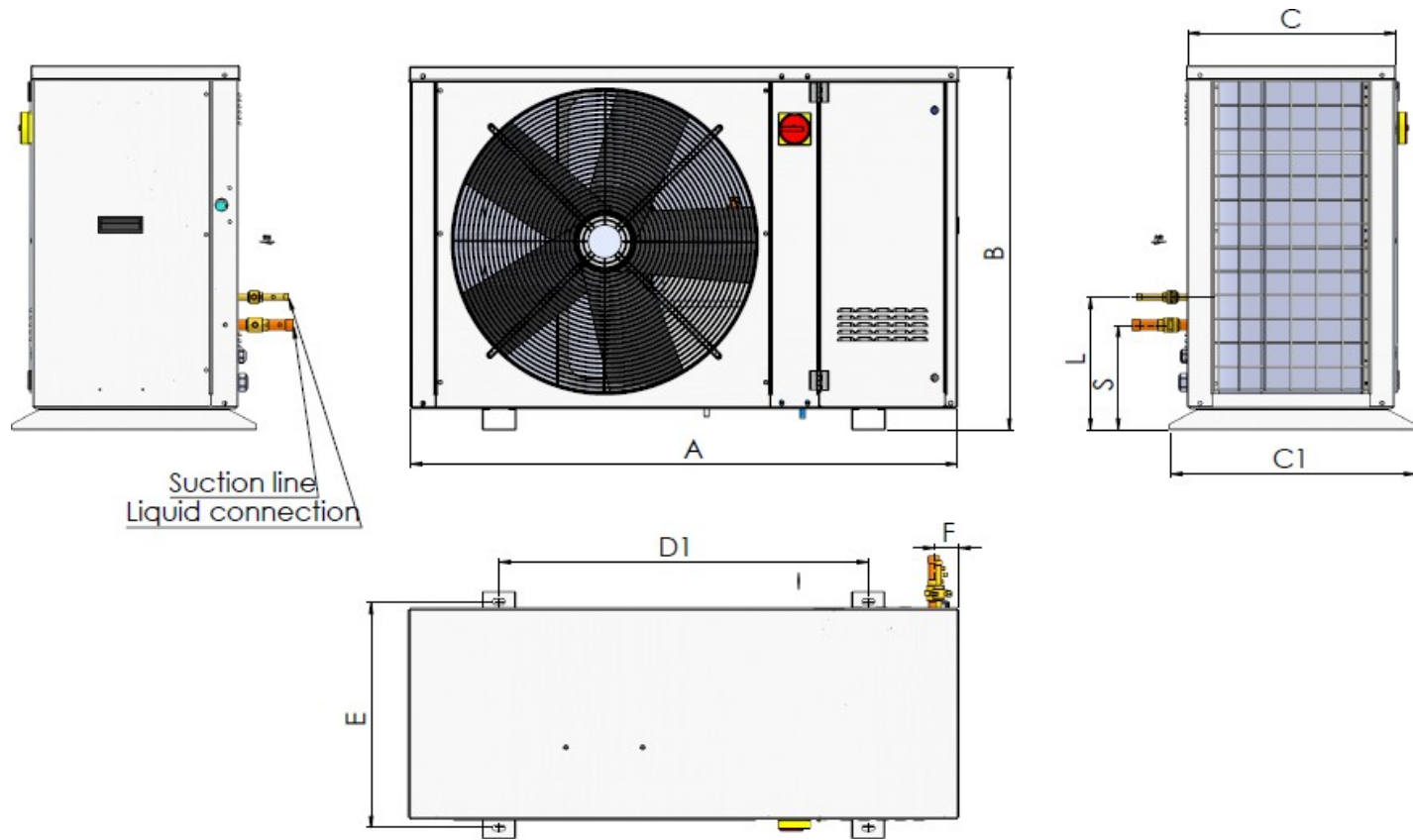
6. Drawings of the units (mm)

6.1. UZ04CRS0045M5X / UZ04CRS0030L5X / UZ04CRS0030L5X / UZ04CRCH045M5X / UZ04CRCH030L5X



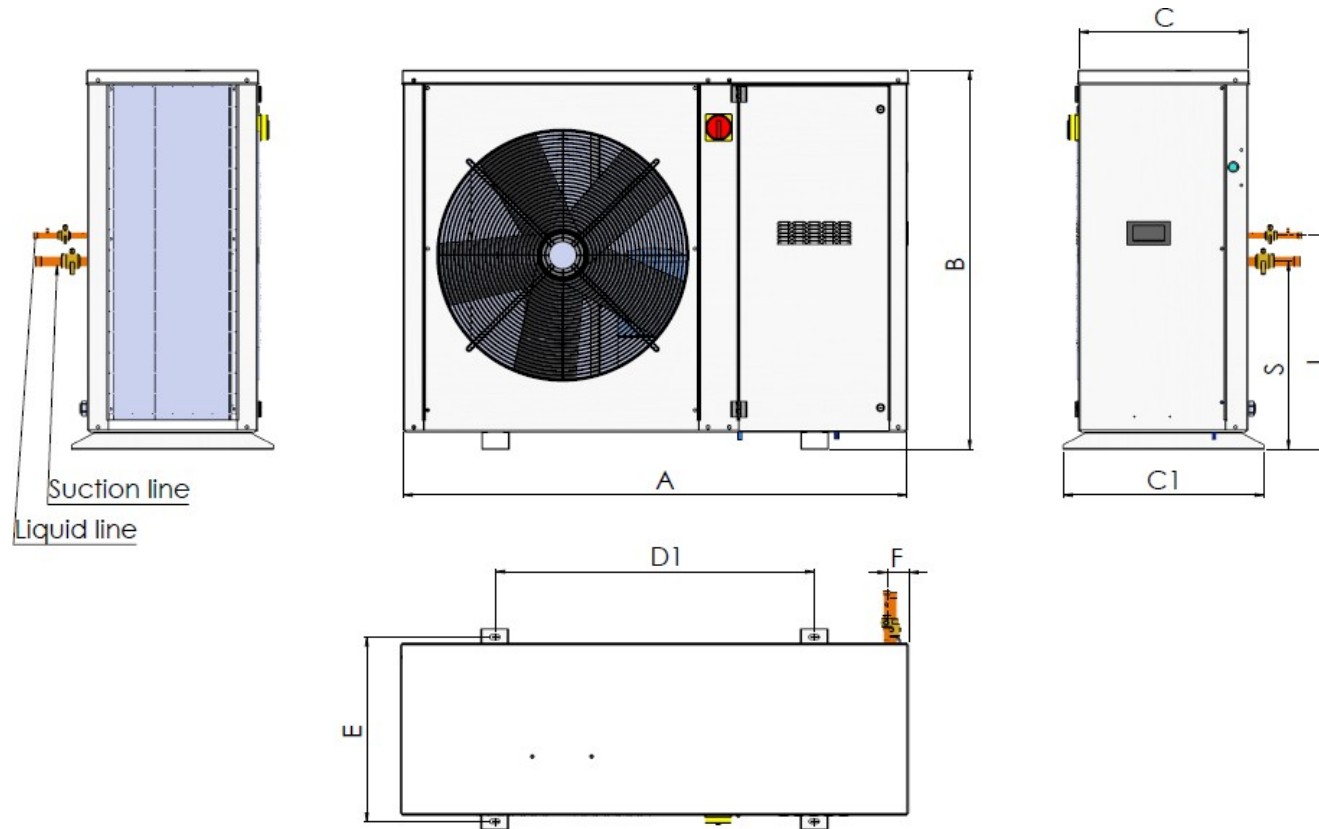
A	1106	C1	536 (CRS) / 541 (CRCH)	F	50
B	560	D1	728	S	150
C	466 (CRS) / 471 (CRCH)	E	496	L	240

6.2. UZ04CRS0070M5X



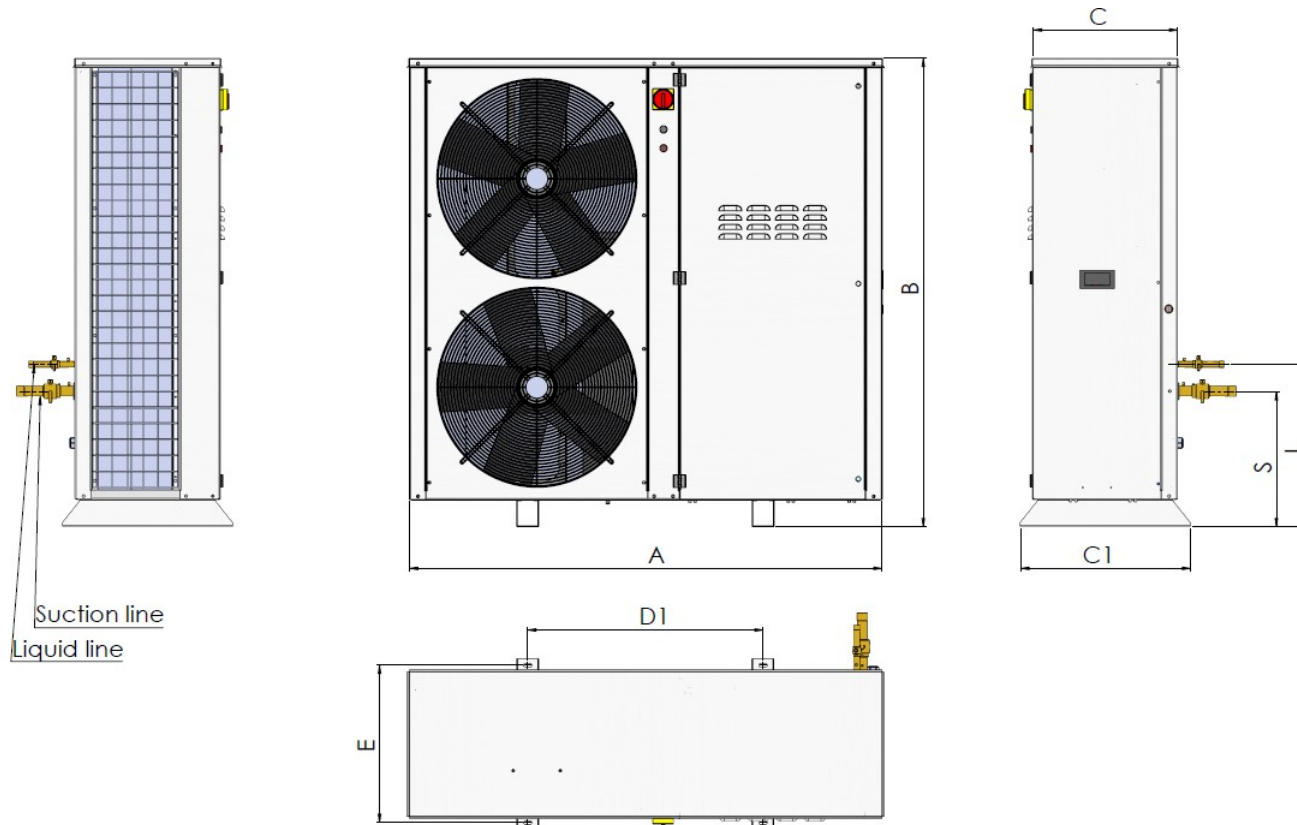
A	1140	C1	510	F	50
B	760	D1	770	S	217
C	430	E	470	L	277

6.3. UZ04CRS0100M5X / UZ04CRS0100M5X / UZ04CRCH100M5X



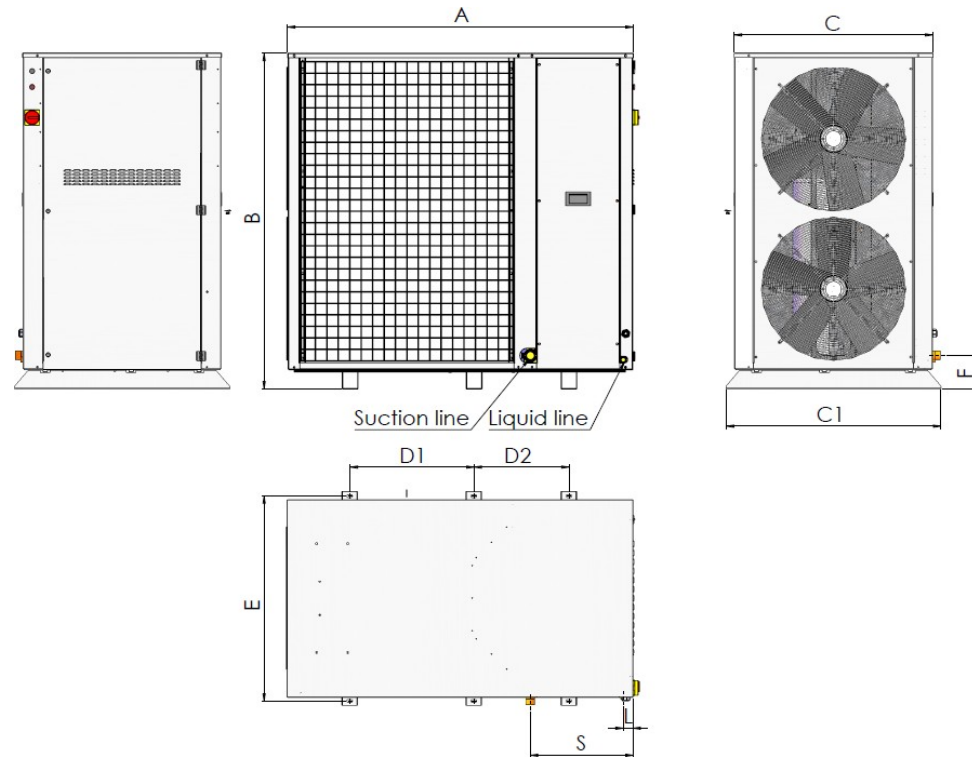
A	1289	C1	510 (CRS) / 515 (CRCH)	F	57
B	963	D1	810	S	478
C	439 (CRS) / 444 (CRCH)	E	470	L	539

6.4. UZ04CRS0210M5X



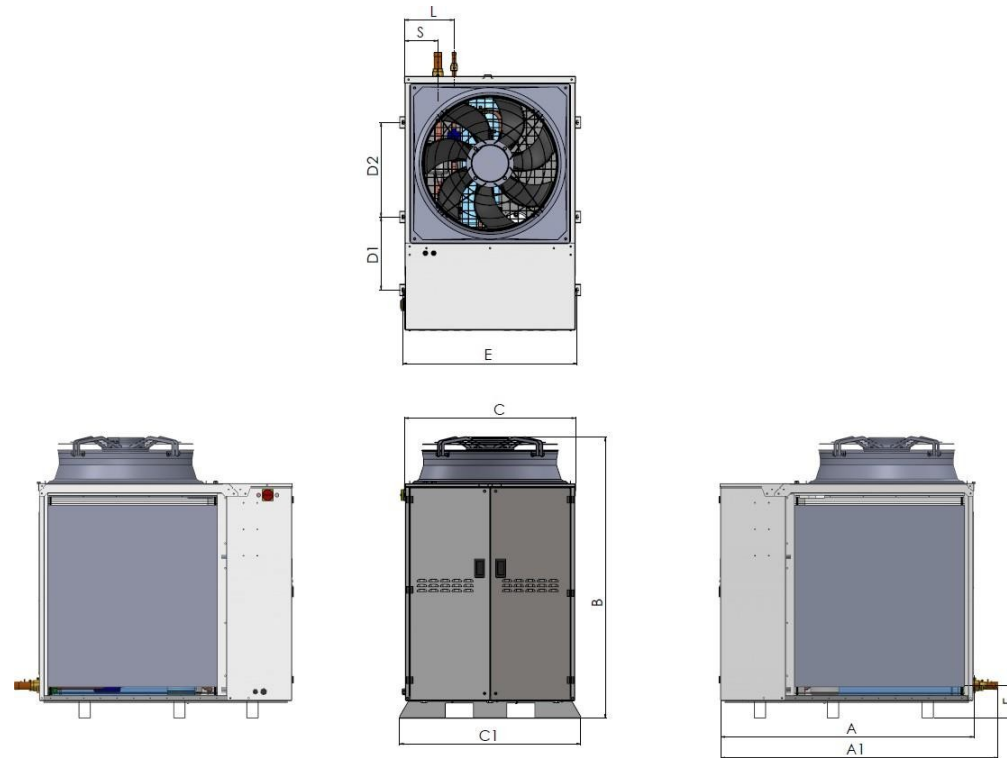
A	1521	C1	541	F	69
B	1493	D1	751	S	519
C	475	E	501	L	430

6.5. UZ04CRS0290M5X



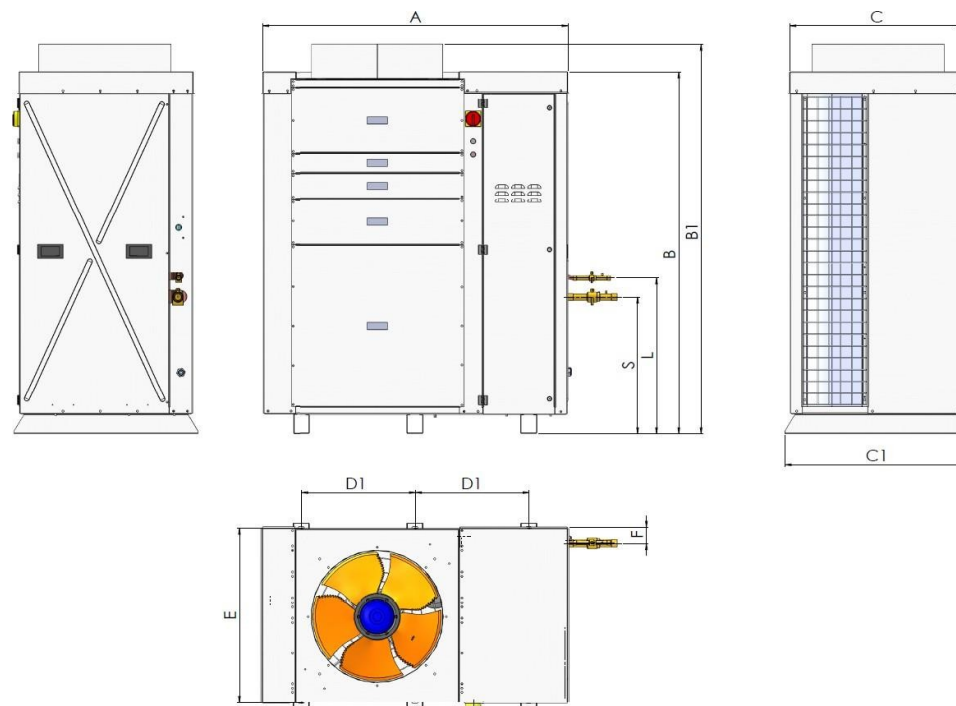
A	1528	E	910
B	1488	F	148
C	879	S	455
C1	950	L	44
D1	549	D2	420

6.6. UZ04CRS0390M5X



A	1525	C	1035	D2	570	S	200
A1	1670	C1	1090	E	1050	L	300
B	1695	D1	440	F	195		

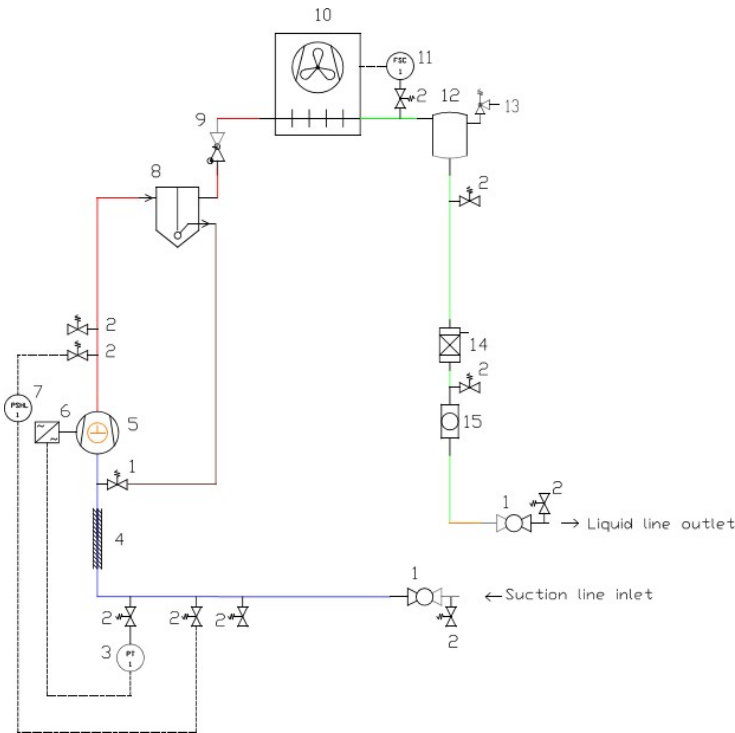
6.7. UZ04CRCV210M5X / UZ04CRCV100L5X



A	1327	D1	490
B	1558	E	750
B1	1677	F	80
C	745	S	590
C1	790	L	670

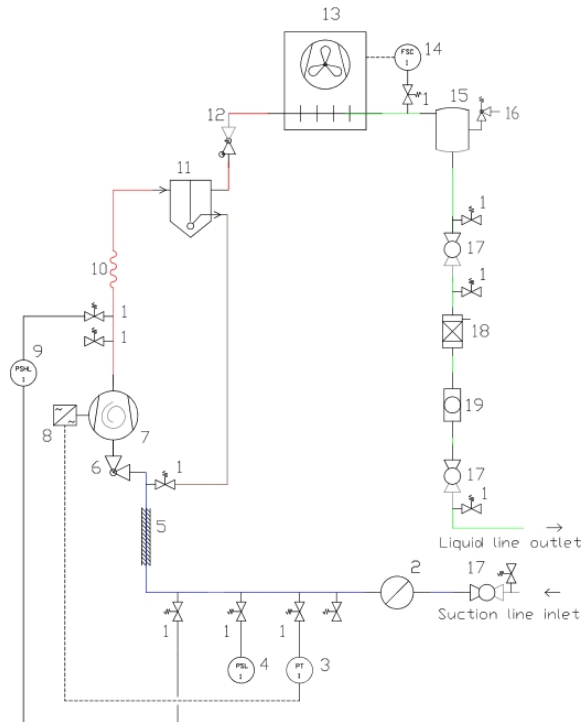
7. Refrigeration diagrams

7.1. UZ04CRS0045M5X / UZ04CRCH045M5X / UZ04CRS0070M5X



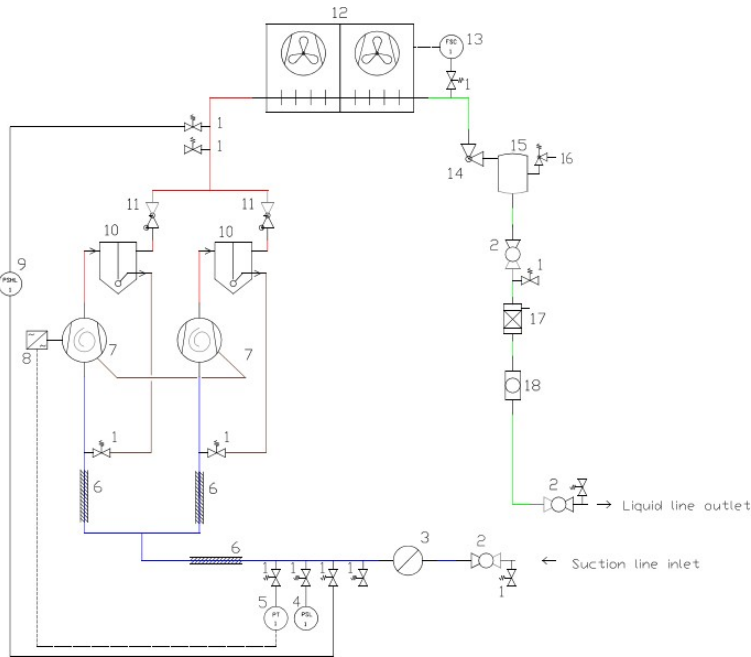
1	Ball valve
2	Schraeder valve
3	LP pressure transducer
4	Isolation
5	Compressor
6	Inverter
7	LP/HP pressure switch
8	Oil separator
9	Non-return valve
10	Capacitor with fan
11	Speed regulator of the fan
12	Liquid container
13	Safety valve
14	Filter drier
15	Sight glass

7.2. UZ04CRS0100M5X / UZ04CRS0100M5X / UZ04CRCH100M5X



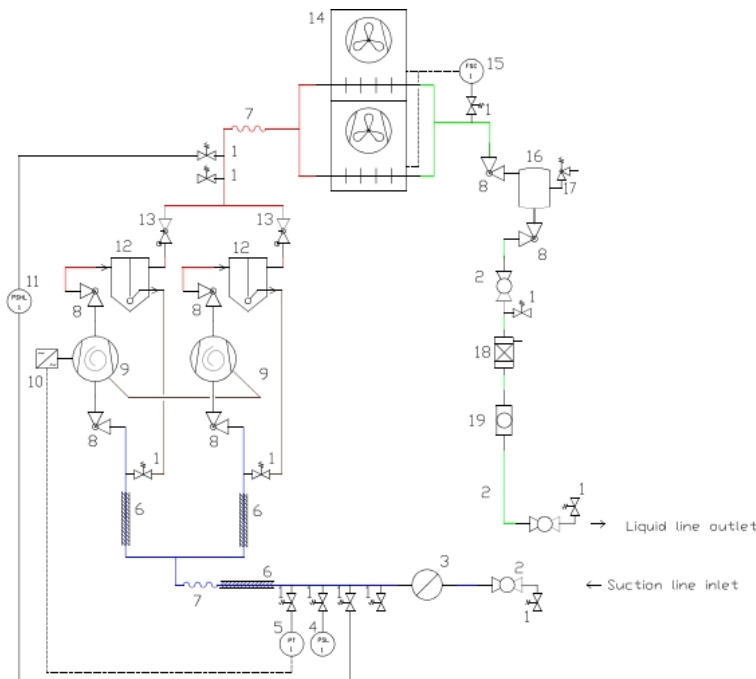
1	Schraeder valve
2	Suction separator
3	LP pressure transducer
4	LP pressure switch
5	Suction insulation
6	Rotalock Valve
7	Compressor
8	Inverter
9	LP/HP dual pressure switch
10	Oil separator
11	Non-return valve
12	Condenser with fan
13	Speed regulator of the fan
14	Liquid container
15	Safety valve
16	Ball valve
17	Filter drier
18	Sight glass

7.3. UZ04CRS0210M5X



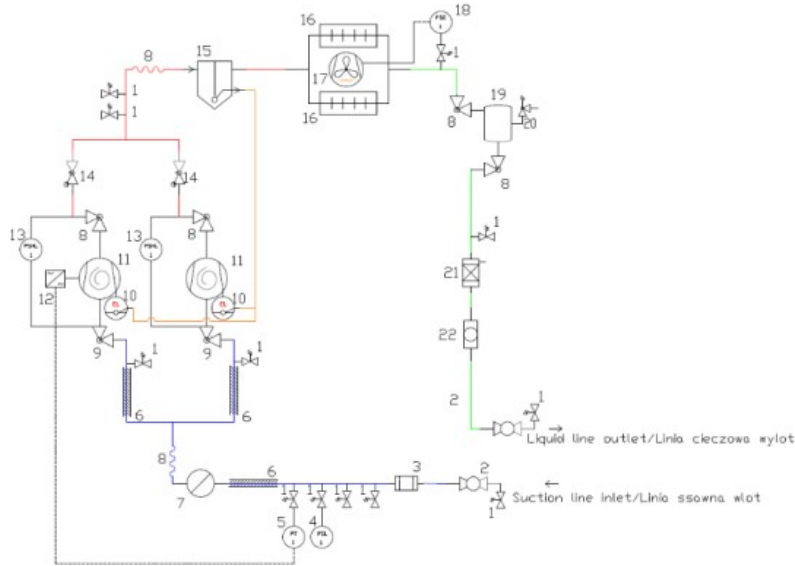
- | | |
|----|-----------------------------|
| 1 | Schraeder valve |
| 2 | Ball valve |
| 3 | Suction separator |
| 4 | LP pressure switch |
| 5 | Pressure transducer Suction |
| 6 | Suction insulation |
| 7 | Compressor |
| 8 | Inverters |
| 9 | LP/HP dual pressure switch |
| 10 | Oil separator |
| 11 | Non-return valve |
| 12 | Condenser with fan |
| 13 | Speed regulator of the fan |
| 14 | Rotalock Valve |
| 15 | Liquid container |
| 16 | Safety valve |
| 17 | Filter drier |
| 18 | Sight glass |

7.4. UZ04CRS0290M5X



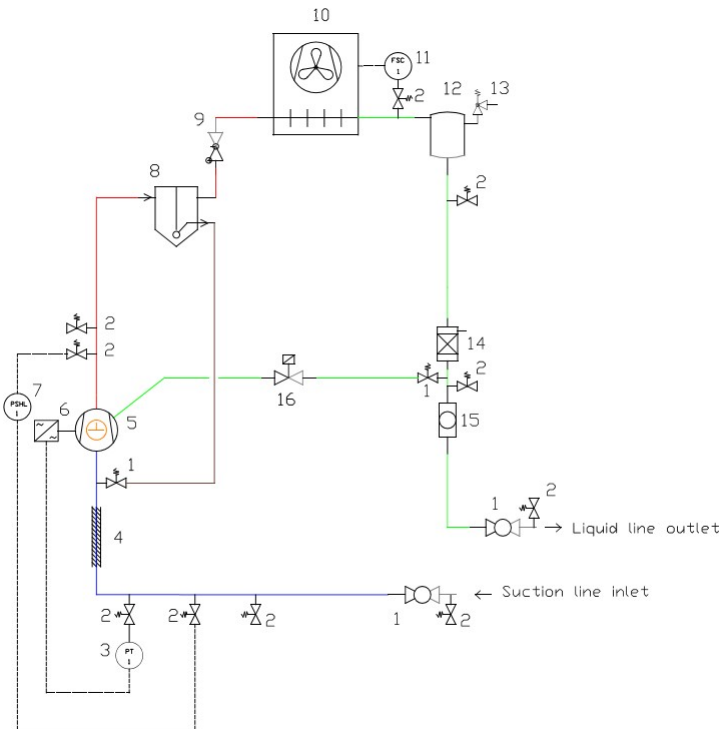
- | | |
|----|-----------------------------|
| 1 | Schraeder valve |
| 2 | Ball valve |
| 3 | Suction separator |
| 4 | LP pressure switch |
| 5 | Pressure transducer Suction |
| 6 | Suction insulation |
| 7 | Vibration damper |
| 8 | Rotalock Valve |
| 9 | Compressor |
| 10 | Inverters |
| 11 | LP/HP dual pressure switch |
| 12 | Oil separator |
| 13 | Non-return valve |
| 14 | Condenser with fan |
| 15 | Speed regulator of the fan |
| 16 | Liquid container |
| 17 | Safety valve |
| 18 | Filter drier |
| 19 | Sight glass |

7.5. UZ04CRS0390M5X



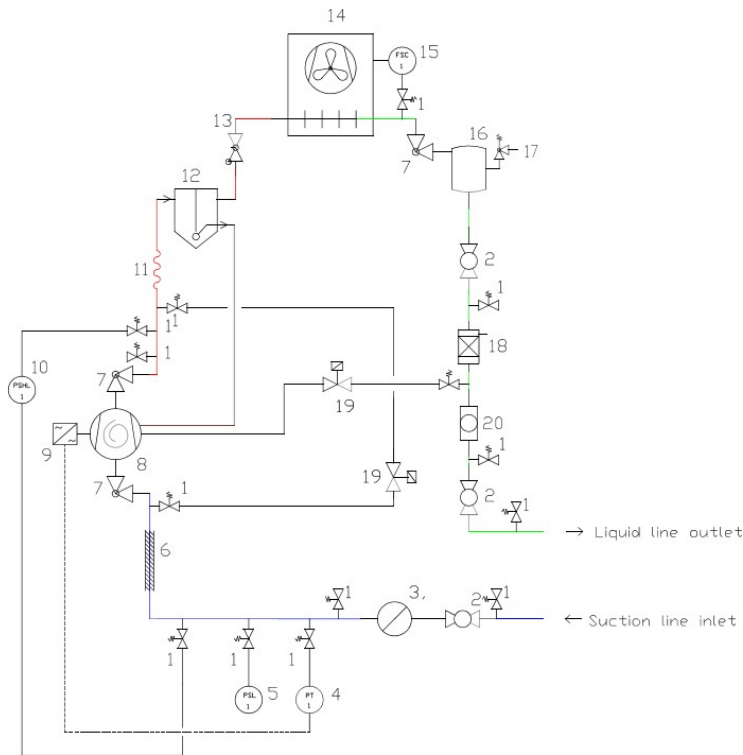
- 1 Schraeder valve
- 2 Ball valve
- 3 Suction filter
- 4 LP pressure switch
- 5 Pressure transducer Suction
- 6 Suction insulation
- 7 Suction separator
- 8 Vibration damper
- 9 Rotalock Valve
- 10 Oil level regulator
- 11 Compressor
- 12 Inverter
- 13 LP/HP dual pressure switch
- 14 Non-return valve
- 15 Oil separator
- 16 Capacitor
- 17 Fan
- 18 Speed regulator of the fan
- 19 Liquid container
- 20 Safety valve
- 21 Filter drier
- 22 Sight glass

7.6. UZ04CRS0030L5X / UZ04CRS0030L5X / UZ04CRCH030L5X



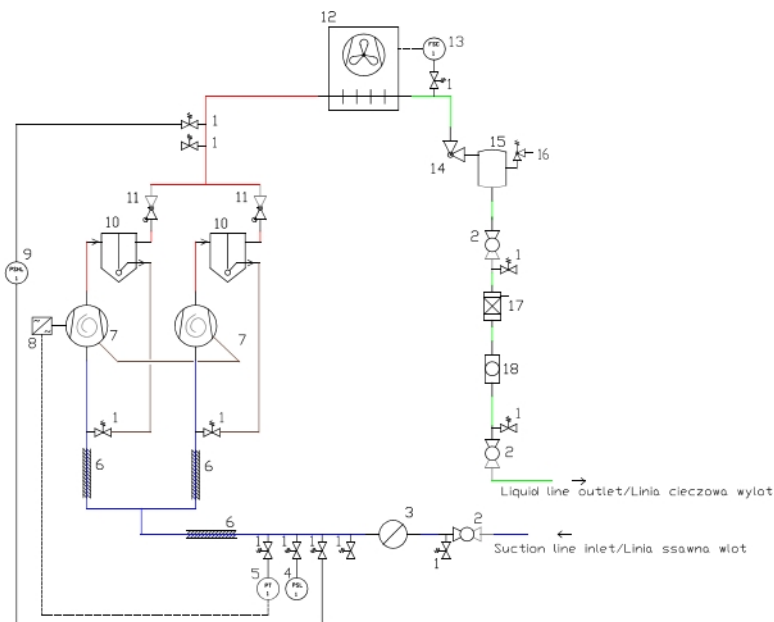
- 1 Ball valve
- 2 Schraeder valve
- 3 LP pressure transducer
- 4 Isolation
- 5 Compressor
- 6 Inverter
- 7 LP/HP pressure switch
- 8 Oil separator
- 9 Non-return valve
- 10 Capacitor with fan
- 11 Speed regulator of the fan
- 12 Liquid container
- 13 Safety valve
- 14 Filter drier
- 15 Sight glass
- 16 Solenoid valve

7.7. UZ04CRS0100L5X



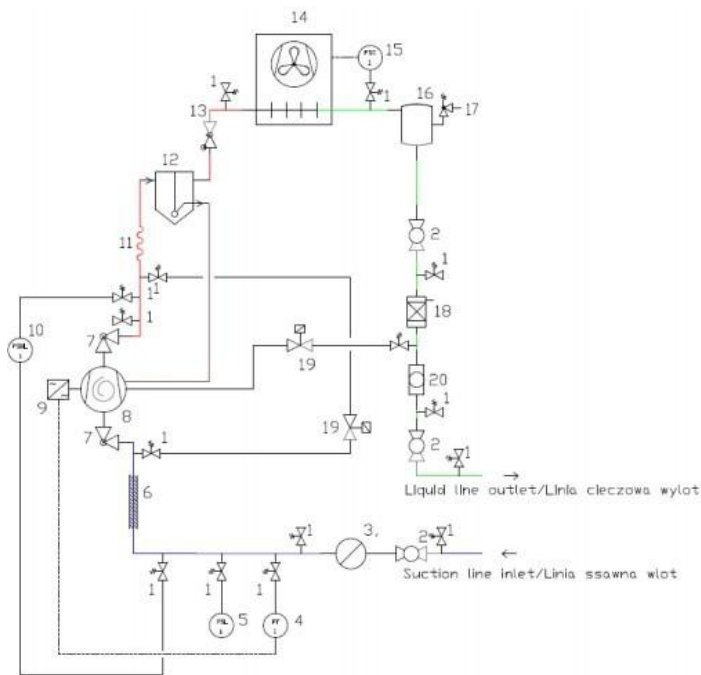
- 1 Schraeder valve
- 2 Ball valve
- 3 Suction separator
- 4 Pressure transducer Suction
- 5 LP pressure switch
- 6 Suction insulation
- 7 Rotalock Valve
- 8 Compressor
- 9 Inverters
- 10 LP/HP dual pressure switch
- 11 Vibration damper
- 12 Oil separator
- 13 Non-return valve
- 14 Condenser with fan
- 15 Speed regulator of the fan
- 16 Liquid container
- 17 Safety valve
- 18 Filter drier
- 19 Solenoid valve NC
- 20 Sight glass

7.8. UZ04CRCVCV210M5X



- 1 Schraeder valve
- 2 Ball valve
- 3 Suction filter
- 4 LP pressure switch
- 5 Pressure transducer Suction
- 6 Suction insulation
- 7 Compressor
- 8 Inverter
- 9 LP/HP dual pressure switch
- 10 Oil separator
- 11 Non-return valve
- 12 Capacitor
- 13 Fan speed controller
- 14 Rotalock Valve
- 15 Liquid container
- 16 Safety valve
- 17 Filter drier
- 18 Sight glass

7.9. UZ04CRCV100L5X



1	Schraeder valve
2	Ball valve
3	Suction filter
4	Pressure transducer Suction
5	LP pressure switch
6	Suction insulation
7	Rotalock Valve
8	Compressor
9	Inverter
10	LP/HP dual pressure switch
11	Vibration damper
12	Oil separator
13	Non-return valve
14	Capacitor
15	Speed regulator of the fan
16	Liquid container
17	Safety valve
18	Filter drier
19	Solenoid valve NC
20	Sight glass



Address:

***Gardotza
Industrial Estate***

48170 - Berriatua, Bizkaia, Spain Tel/Mail:

+34 946 036 200 / kide@kide.com
