



LIANG CHI INDUSTRY (THAILAND) CO., LTD.

COUNTER FLOW INDUCED DRAFT LBC TYPE COOLING TOWER SPECIFICATION

DATE :
 TOWER MODEL NO. : LBC - T - 70
 NO. OF SETS : 1

DESIGN & OPERATING CONDITIONS

WATER FLOW RATE. : 777 LPM.
 HOT WATER TEMP. : 37 °C
 COLD WATER TEMP : 32 °C
 AMB. WET BULB TEMP. : 28 °C
 FAN B.H.P. : 1.25 BHP
 TOWER PUMP HEAD : 2 M
 DRIFT LOSS OF WATER FLOW RATE : 0.2 %
 EVAPORATION LOSS OF WATER FLOW RATE : 0.83 %
 DESIGN WIND LOAD : 150 Kg / M²

STRUCTURAL DETAILS

OVERALL DIMENSION : 2175 MM
 DRY WEIGHT : 277 Kg
 OPERATING WEIGHT PER TOWER : 707 Kg

CONSTRUCTION

TOWER SUPPORTER FRAME ASS'Y : F.R.P.
 CASING : F.R.P.
 CASING SUPPORTOR : H.D.G.S.
 COLD WATER BASIN : F.R.P.
 FILLING : P.V.C.
 FILLING SUPPORTOR : H.D.G.S.
 FAN GUARD : H.D.G.S.
 MECHANICAL EQUIPMENT SUPPORTOR : H.D.G.S.
 INLET LOUVER : P.V.C.
 BOLTS,NUTS & WASHERS : C.P.S.

LIANG CHI IND. (THAILAND) CO., LTD.	
TECHNIC DEPT.	
<input type="checkbox"/>	FOR REFERENCE
<input checked="" type="checkbox"/>	FOR APPROVAL
<input type="checkbox"/>	APPROVED
<input type="checkbox"/>	OTHER.....
DATE :	
TECHNIC BY :	



LIANG CHI INDUSTRY (THAILAND) CO., LTD.

COUNTER FLOW INDUCED DRAFT LBC TYPE COOLING TOWER SPECIFICATION

WATER DISTRIBUTION

STAND PIPE : P.V.C.
 SPRINKLER HEAD : A.A.
 MODEL : LSH-100
 SPRINKLER PIPE : P.V.C.

MECHANICAL EQUIPMENTS

FAN UNIT

NO. OF UNIT : 1 UNIT / SET
 TYPE : AXIAL FLOW
 MODEL : LSF-120
 MANUFACTUROR : LIANG CHI IND.CO.,LTD.
 DIAMETER : 1170 MM
 NO. OF BLADES : 3
 FAN SPEED : 700 RPM
 TIP SPEED : 42.8 M/S
 BLADE MATERIAL : A.A.
 HUP MATERIAL : A.A.
 AIR VOLUME : 500 M³ / MIN/SET

FAN MOTOR

NO. OF UNIT : 1 UNIT / SET
 TYPE : TEFC
 INSULATION : CLASS F IP55
 MANUFACTUROR : LIANG CHI
 SPEED : 700 RPM
 RATED H.P : 2 H.P * 8P
 POWER SOURCE (VOLT / PHASE / HZ) : 380 / 3 / 50

LIANG CHI IND. (THAILAND) CO., LTD.	
TECHNIC DEPT.	
<input type="checkbox"/>	FOR REFERENCE
<input checked="" type="checkbox"/>	FOR APPROVAL
<input type="checkbox"/>	APPROVED
<input type="checkbox"/>	OTHER.....
DATE :	
TECHNIC BY :	



LIANG CHI INDUSTRY (THAILAND) CO., LTD.

COUNTER FLOW INDUCED DRAFT LBC TYPE COOLING TOWER SPECIFICATION

<u>PIPING CONNECTION</u>		SIZE		Q'TY / SET
WATER INLET	:	4	B (100 A)	1
WATER OUTLET	:	4	B (100 A)	1
AUTO FILL	:	3/4	B (20 A)	1
QUICK FILL	:	1	B (25 A)	1
OVER FLOW	:	1	B (25 A)	1
DRAIN	:	2	B (50 A)	1

REMARK

F.R.P : FIBERGLASS REINFORCE PLASTIC

H.D.G.S : HOT DIP GALVALNIZED STEEL

A.A. : ALUMINIUM ALLOY

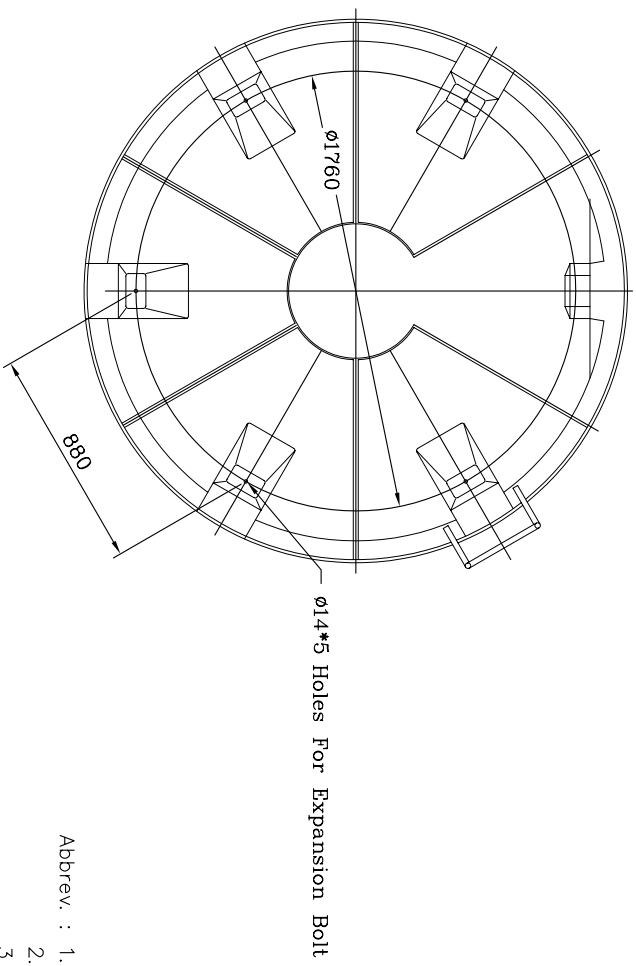
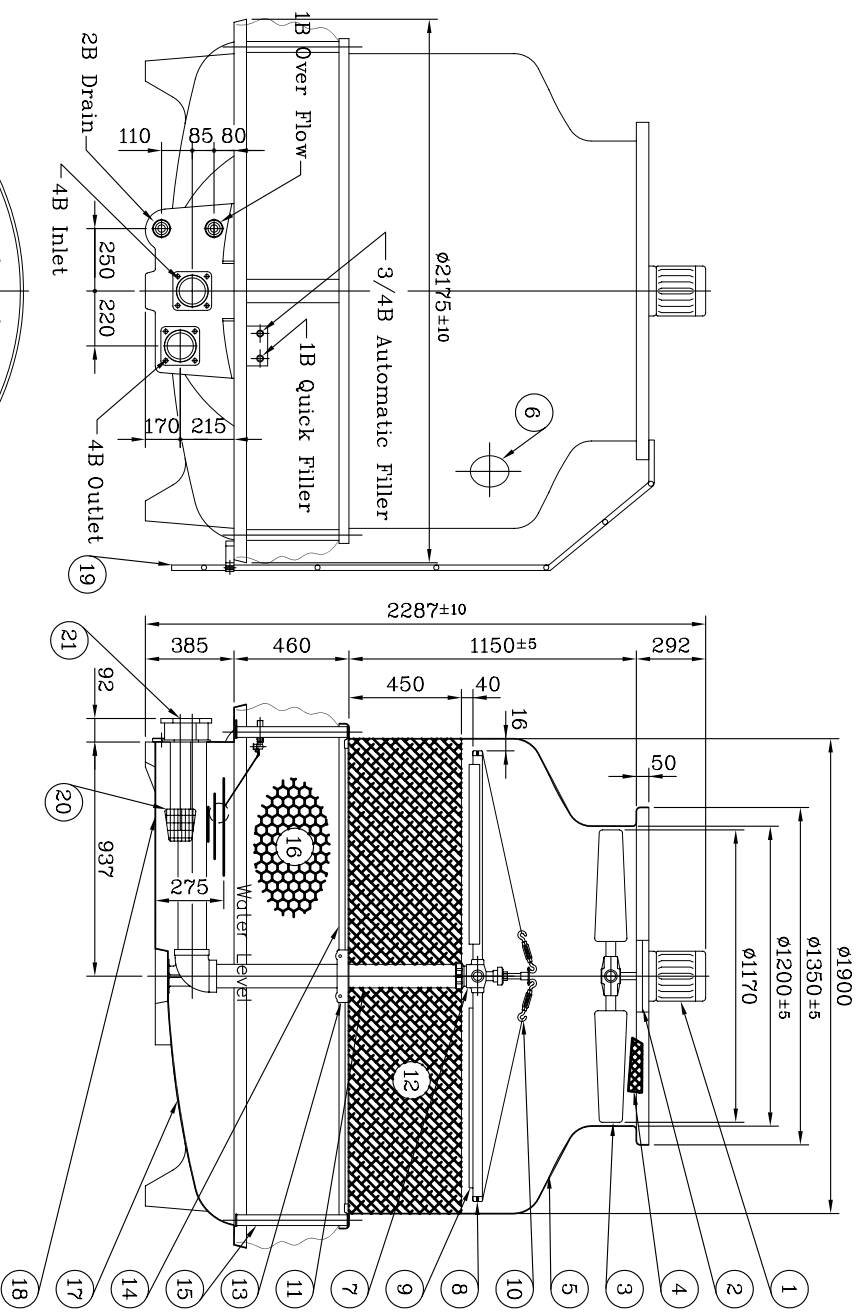
C.P.S. : CHROMATED - PLATING STEEL

DESIGNED : 

CHECK : 

APPROVE : 

LIANG CHI IND. (THAILAND) CO., LTD.	
TECHNIC DEPT.	
<input type="checkbox"/>	FOR REFERENCE
<input checked="" type="checkbox"/>	FOR APPROVAL
<input type="checkbox"/>	APPROVED
<input type="checkbox"/>	OTHER.....
DATE :	
TECHNIC BY :	



LIANG CHI IND. (THAILAND) CO.,LTD
TECHNIC DEPT.
 FOR REFERENCE
 FOR APPROVAL
 APPROVAL
 OTHER.....
 DATE: ..
 TECHNIC BY: ..

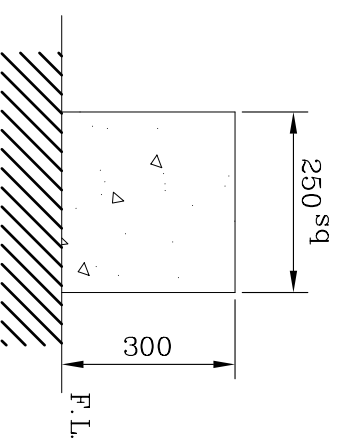
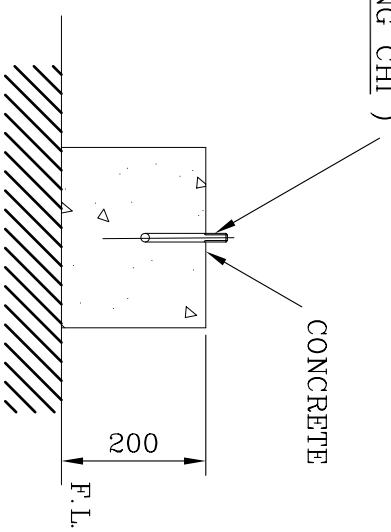
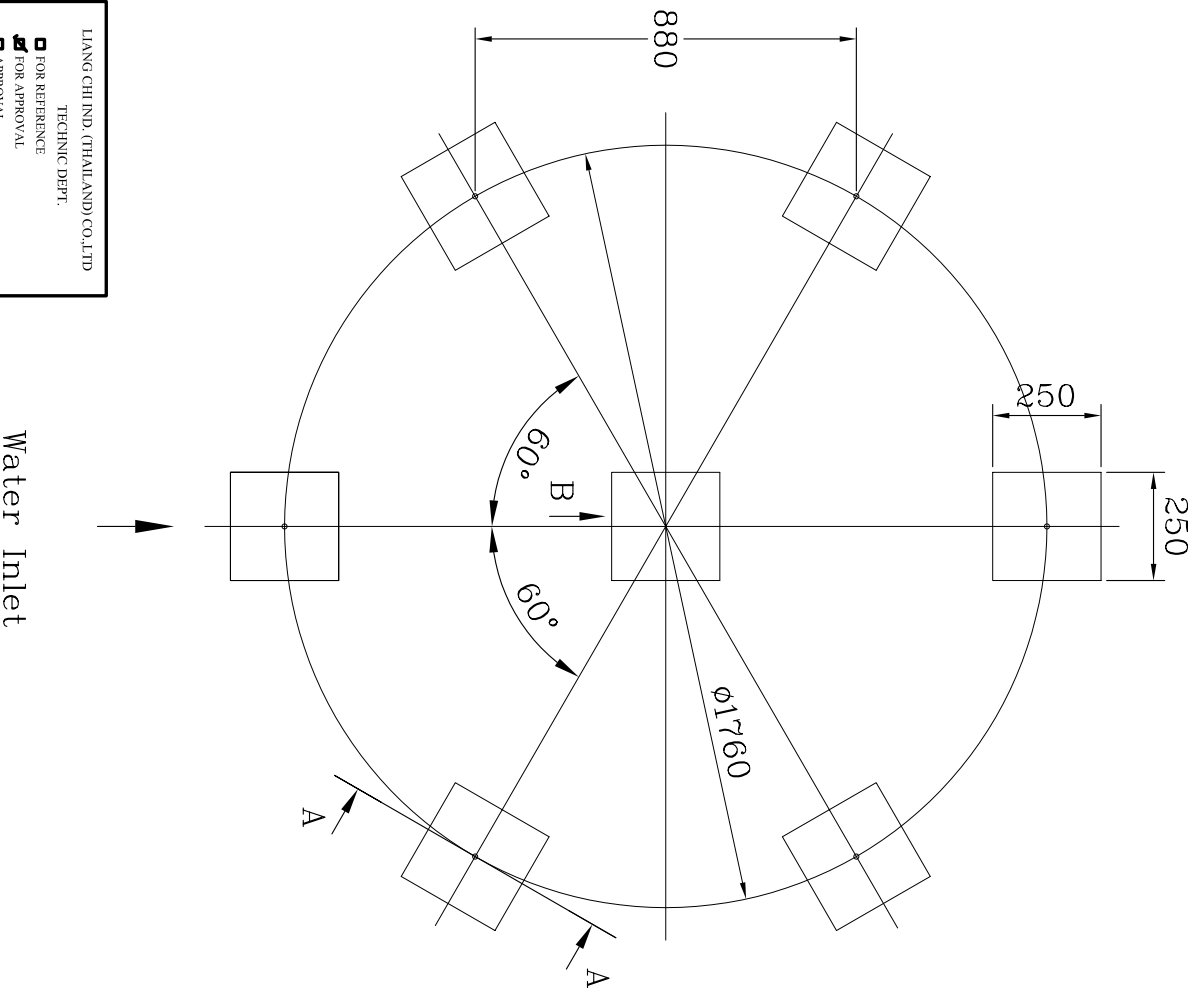
Description	M.T	Specification	Q'ty
1 Fan Motor		1 1/2HP*8P	1 PCS
2 Motor Framework Ass'y	H.D.G.S		1 PCS
3 Fan	A.A.	LSF-120	1 SET
4 Fan Guard	H.D.G.S.		1 SET
5 Casing	F.R.P.		4 PCS
6 Hand Hole	E.V.A.		1 PCS
7 Sprinkler Head	A.A.	LSH-100	1 PCS
8 Sprinkler Pipe	P.V.C.		4 POS
9 Eliminator	P.V.C.		4 PCS
10 Tension Device	P.V.C.		4 SET
11 Stand Pipe	P.V.C.		1 PCS
12 Filling	P.V.C.		1 SET
13 Stopper or Column	A.A.		1 SET
14 Filling Supporter	H.D.G.S		1 SET
15 Casing Supporter	H.D.G.S		6 PCS
16 Inlet Louver	P.V.C.		1 SET
17 Water Basin	F.R.P.		5 PCS
18 Water Sump	F.R.P.		1 PCS
19 Ladder	H.D.G.S		1 PCS
20 Strainer	P.E.		1 PCS
21 Flange	H.D.G.S		2 PCS

Drain	50A (2 B)	Over Flow	25A(1 B)	
Outlet	100A (4 B)	Quick Filler	25A(1 B)	
Inlet	100A (4 B)	Automatic filler	20A(3/4B)	
Dry Weight		277 kgs	Operating Weight	707 kgs
Loading Data				
Ambient Wetbulb	: 28 °C	Air Volume	: 500 M ³ /MIN	
Outlet Water Temp	: 32 °C	Water Flow	: 777 LPM	
Inlet Water Temp	: 37 °C	Cooling Capacity	: 233,100 Kcal/HR	

REV.	DATE	DWG BY	APP.	NOTE
		LBC-T-70		
TITLE				
OUTLINE VIEW				
APP.	K.Somons	DESIGN	Annot	
CHECK	SURASAK	DWG BY.	Annot	
LIANG CHI INDUSTRY (THAILAND) CO., LTD. 223 Moo 9 Tap-YaoLad-KRABANG BANGKOK 10520 (NUM KAI INDUSTRIAL ZONE LUANG-PAENG RD.)				LBC-T-70-01

Abbrev. : 1. H.D.G.S.:Hot Dip Galvanized Steel
 2. A.A. : Aluminum Alloy
 3. S.T.S :Stainless Steel 304
 4. F.R.P. :Fiberglass Reinforced Plastic

EXPANSION BOLT (BY LIANG CHI)



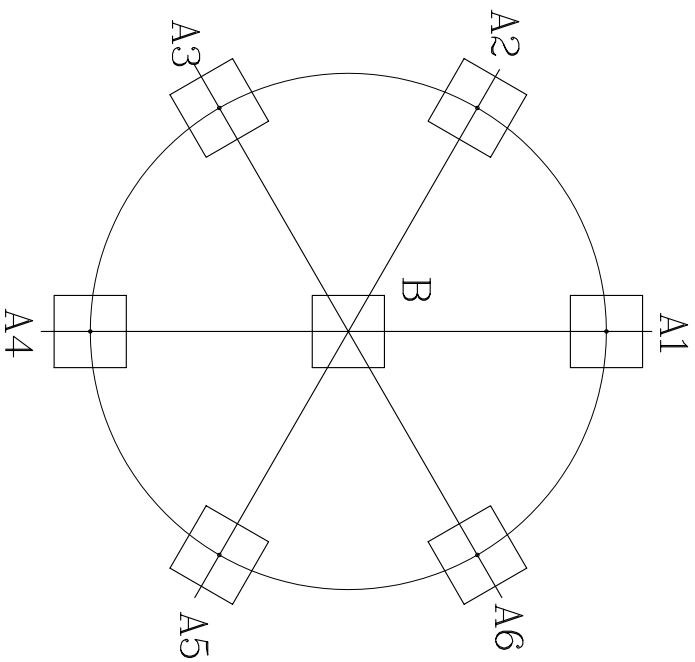
REMARK :

1. THIS FOUNDATION DRAWING IS PROVIDED FOR END USER'S REFERENCE.
 2. COOLING TOWER DOES NOT INCLUDE FOUNDATION
 3. THE LEVEL TOLERANCE OF FOUNDATION IS ± 2 mm.
 4. THE HEIGHT OF FOUNDATION EXCLUDES THERMAL ISOLATOR AND WATER PROOF.
 - * 5. EXPANSION BOLT & RUBBER PAD SHALL BE FURNISHED BY LIANG CHI
- (PLEASE DON'T PREPARE HOLE OF EXPANSION BOLT BEFORE INSTALLATION)

LIANG CHI IND. (THAILAND) CO.,LTD	
TECHNIC DEPT.	
<input type="checkbox"/>	FOR REFERENCE
<input checked="" type="checkbox"/>	FOR APPROVAL
<input type="checkbox"/>	APPROVAL
<input type="checkbox"/>	OTHER.....
DATE:	
TECHNIC BY:	

Water Inlet

REV.	DATE	DWG BY	APP.	NOTE
		LBC-T-70		
Concrete Foundation				
APP.	K.Sommons	DESIGN	Annot	
CHECK	SURASAK	DWG BY.	Annot	
LIANG CHI INDUSTRY (THAILAND) CO., LTD.				
223 Moo 9 Tab-YaoLad-KRABANG BANGKOK 10520				
(NUM KRAL INDUSTRIAL ZONE LUANG-PAENG RD.)				
				LBC-T-70-02



UNIT : KG.

LBC-T-70	A1 = A2 = ... = A6	B
	54	383

LIANG CHI IND. (THAILAND) CO.,LTD
TECHNIC DEPT.

FOR REFERENCE
 FOR APPROVAL
 OTHER.....
 DATE:
 TECHNIC BY:

REV.	DATE	DWG BY	APP.	NOTE
TITLE LBC-T-70 Loading Data				
APP.	K.Sommons	DESIGN	Annat	MM
CHECK	SURASAK	DWG BY.	Annat	DWG-NO
LIANG CHI INDUSTRY (THAILAND) CO., LTD. 223 Moo 9 Tab-Yaolad-Krabang Bangkok 10520 (NUM KRAI INDUSTRIAL ZONE LUANG-PAENG RD.)				LBC-T-70-03