



LIANG CHI INDUSTRY (THAILAND) CO., LTD.

COUNTER FLOW INDUCED DRAFT LBC TYPE COOLING TOWER SPECIFICATION

DATE :
 TOWER MODEL NO. : LBC - T - 400
 NO. OF SETS : 1

DESIGN & OPERATING CONDITIONS

WATER FLOW RATE. : 4,500 LPM
 HOT WATER TEMP. : 37 °C
 COLD WATER TEMP : 32 °C
 AMB. WET BULB TEMP. : 28 °C
 EACH FAN B.H.P. : 12.5 BHP
 TOWER PUMP HEAD : 4 M
 DRIFT LOSS OF WATER FLOW RATE : 0.2 %
 EVAPORATION LOSS OF WATER FLOW RATE : 0.83 %
 DESIGN WIND LOAD : 150 Kg / M²

STRUCTURAL DETAILS

OVERALL DIMENSION : 5180 MM
 DRY WEIGHT : 2171 Kg
 OPERATING WEIGHT PER TOWER : 6811 Kg

CONSTRUCTION

TOWER SUPPORTER FRAME ASS'Y : H.D.G.S.
 CASING : F.R.P.
 CASING SUPPORTOR : H.D.G.S.
 COLD WATER BASIN : F.R.P.
 FILLING : P.V.C.
 FILLING SUPPORTOR : H.D.G.S.
 FAN GUARD : H.D.G.S.
 MECHANICAL EQUIPMENT SUPPORTOR : H.D.G.S.
 INLET LOUVER : P.V.C.
 BOLTS,NUTS & WASHERS : C.P.S.

LIANG CHI IND. (THAILAND) CO., LTD.	
TECHNIC DEPT.	
<input type="checkbox"/>	FOR REFERENCE
<input checked="" type="checkbox"/>	FOR APPROVAL
<input type="checkbox"/>	APPROVED
<input type="checkbox"/>	OTHER.....
DATE :	
TECHNIC BY :	



LIANG CHI INDUSTRY (THAILAND) CO., LTD.

COUNTER FLOW INDUCED DRAFT LBC TYPE COOLING TOWER SPECIFICATION

WATER DISTRIBUTION

STAND PIPE : P.V.C.
 SPRINKLER HEAD : A.A.
 MODEL : LSH - 200
 SPRINKLER PIPE : P.V.C.

MECHANICAL EQUIPMENTS

FAN UNIT

NO. OF UNIT : 1 UNIT / SET
 TYPE : AXIAL FLOW
 MODEL : LSF-300
 MANUFACTUROR : LIANG CHI IND.CO.,LTD.
 DIAMETER : 2970 MM
 NO. OF BLADES : 4
 FAN SPEED : 342 RPM
 TIP SPEED : 53.18 M/S
 BLADE MATERIAL : A.A.
 HUP MATERIAL : A.A.
 AIR VOLUME : 2600 M³ / MIN/SET

SPEED REDUCER

NO. OF UNIT : 1 UNIT / SET
 TYPE : BELT
 MODEL : VBA-110-B
 MANUFACTUROR : LIANG CHI IND.CO.,LTD.
 REDUCTION RATIO : 2.78 : 1

LIANG CHI IND. (THAILAND) CO., LTD.	
TECHNIC DEPT.	
<input type="checkbox"/>	FOR REFERENCE
<input checked="" type="checkbox"/>	FOR APPROVAL
<input type="checkbox"/>	APPROVED
<input type="checkbox"/>	OTHER.....
DATE :	
TECHNIC BY:	



LIANG CHI INDUSTRY (THAILAND) CO., LTD.

COUNTER FLOW INDUCED DRAFT LBC TYPE COOLING TOWER SPECIFICATION

FAN MOTOR

NO. OF UNIT : 1 UNIT / SET
 TYPE : TEFC
 INSULATION : CLASS F IP55
 MANUFACTUROR : LIANG CHI
 SPEED : 950 RPM
 RATED H.P : 15 H.P * 6P
 POWER SOURCE (VOLT / PHASE / HZ) : 380 / 3 / 50

PIPING CONNECTION

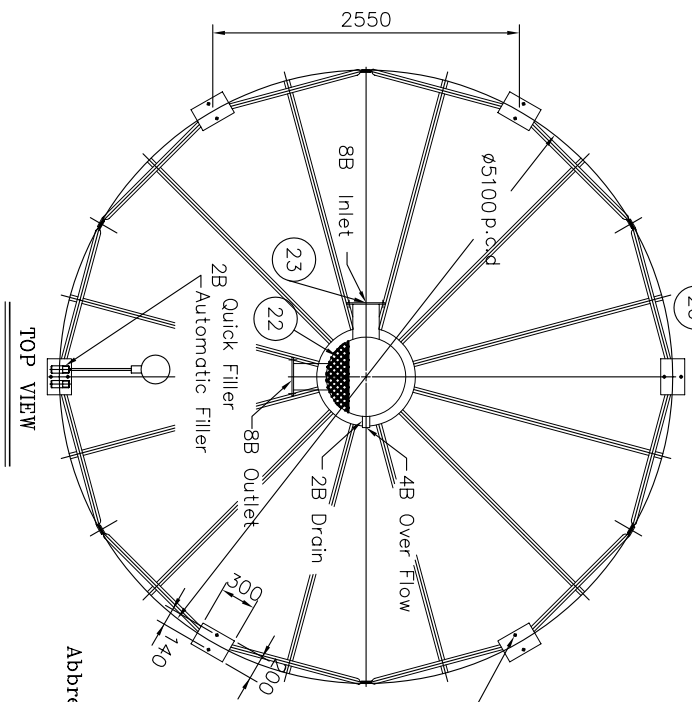
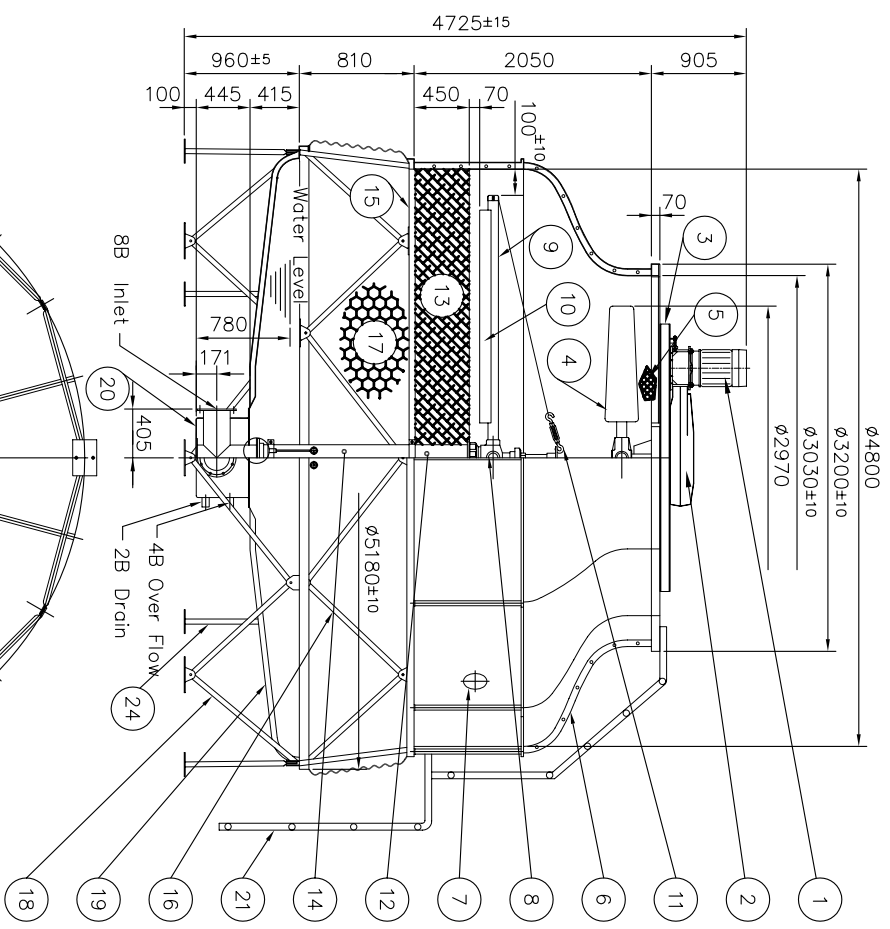
	SIZE	Q'TY / SET
WATER INLET	8 B (200A)	1
WATER OUTLET	8 B (200 A)	1
AUTO FILL	2 B (50 A)	1
QUICK FILL	2 B (50 A)	1
OVER FLOW	4 B (100 A)	1
DRAIN	2 B (50 A)	1

REMARK

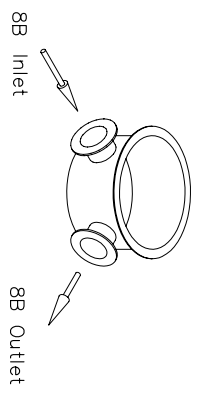
F.R.P : FIBERGLASS REINFORCE PLASTIC
 H.D.G.S : HOT DIP GALVALNIZED STEEL
 A.A. : ALUMINIUM ALLOY
 C.P.S. : CHROMATED - PLATING STEEL

DESIGNED :
 CHECK :
 APPROVE :

LIANG CHI IND. (THAILAND) CO., LTD.	
TECHNIC DEPT.	
<input type="checkbox"/>	FOR REFERENCE
<input checked="" type="checkbox"/>	FOR APPROVAL
<input type="checkbox"/>	APPROVED
<input type="checkbox"/>	OTHER.....
DATE :	
TECHNIC BY :	



LIANG CHI IND. (THAILAND) CO., LTD
TECHNIC DEPT.
 FOR REFERENCE
 FOR APPROVAL
 APPROVAL
 OTHER.....
 DATE :
 TECHNIC BY :



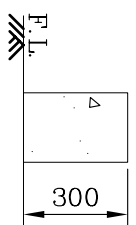
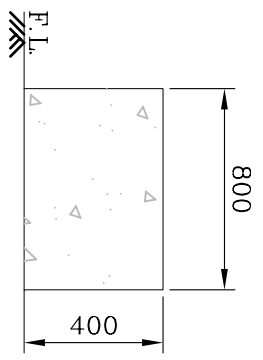
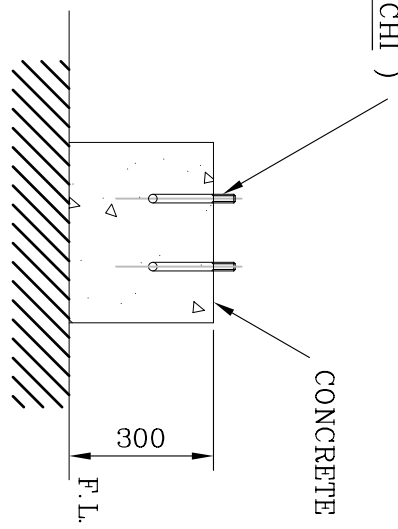
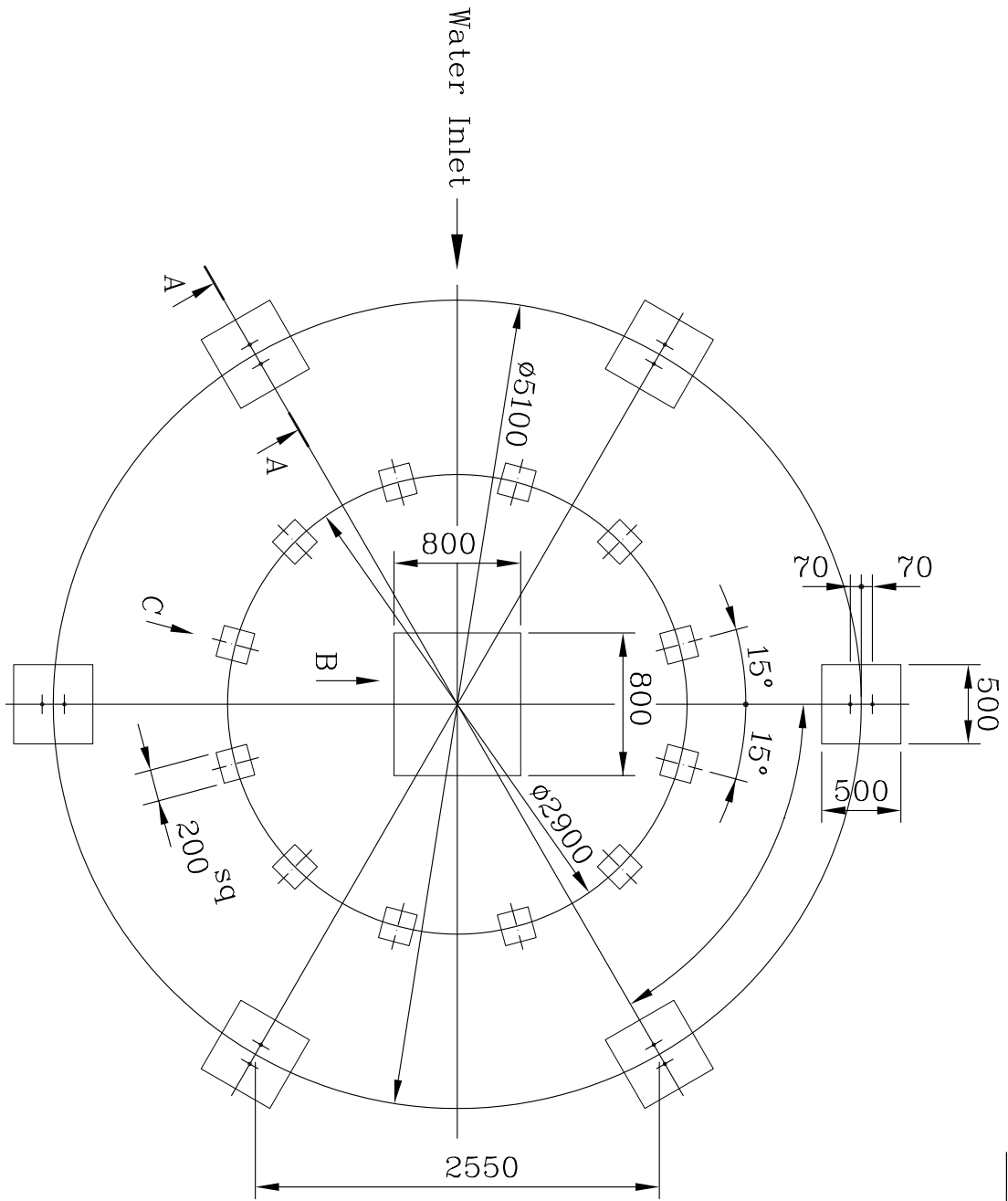
Abbrev. : 1. H.D.G.S: Hot Dip Galvanized Steel
 2. A.A. : Aluminum Alloy
 3. S.T.S : Stainless Steel 304
 4. F.R.P. : Fiberglass Reinforced Plastic

Description	M.T	Specification	Qty
1 Fan Motor		15HP*6P	1/pcs.
2 Belt Reducer		VBA-110-B	1/set.
3 Motor Framework Ass'y	H.D.G.S		1/set.
4 Fan	A.A.	LSF-300	1/set.
5 Fan Guard	H.D.G.S		1/set.
6 Casing	F.R.P.		12/pcs.
7 Hand Hole	E.V.A		1/pcs.
8 Sprinkler Head	A.A.	LSH-200	1/set.
9 Sprinkler Pipe	P.V.C.		6/pcs.
10 Eliminator	F.R.P.		6/pcs.
11 Tension Device	H.D.G.S		6/set.
12 Stand Pipe	P.V.C.		1/pcs.
13 Filling	P.V.C.		1/set.
14 Stopper or Column	H.D.G.S		1/set.
15 Filling Supporter	H.D.G.S		1/set.
16 Casing Supporter	H.D.G.S		6/pcs.
17 Inlet Louver	P.V.C.		1/set.
18 Frame Ass'y	H.D.G.S		1/set.
19 Water Basin	F.R.P.		12/pcs.
20 Water Sump	F.R.P.		1/pcs.
21 Ladder	H.D.G.S		1/set.
22 Strainer	S.T.S		1/pcs.
23 Flange	H.D.G.S		2/pcs.
24 Basin Supportor	H.D.G.S		12/pcs.

Drain	50A (2 B)	Over Flow	100A(4 B)
Outlet	200A (8 B)	quick filler	50A(2 B)
Inlet	200A (8 B)	Automatic filler	50A(2 B)
Pipe Connections			
Dry Weight	2,171 kgs	Operating Weight	6,811 kgs
Loading Data			
Ambient Wetbulb	: 28 °C	Air Volume	: 2,600 M ³ /MIN
Outlet Water Temp	: 32 °C	Water Flow	: 4,500 LPM
Inlet Water Temp	: 37 °C	Cooling Capacity	: 1,350,000 Kcal/HR

REV.	DATE	DWG BY	APP.	NOTE
LBC-T-400				
TITLE				
OUTLINE VIEW				
APP.	K.Somnonsi	DESIGN	Amnat	MM
CHECK	SURASAK	DWG BY	Amnat	DWG-NO
LIANG CHI INDUSTRY (THAILAND) CO., LTD. 223 moo 9 TAB-YAO LAD -KRABANG BANGKOK 10520 (NUM KAI INDUSTRIAL ZONE LUANG-PAENG RD.)				
				LBC-T-400-01

EXPANSION BOLT (BY LIANG CHI)



REMARK :

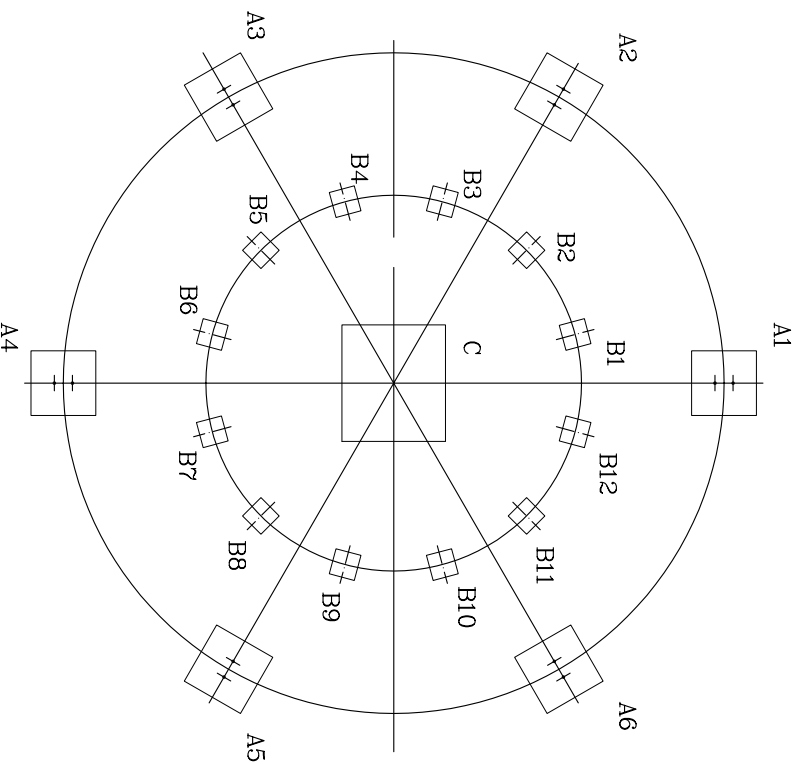
1. THIS FOUNDATION DRAWING IS PROVIDED FOR END USER'S REFERENCE.
 2. COOLING TOWER DOES NOT INCLUDE FOUNDATION
 3. THE LEVEL TOLERANCE OF FOUNDATION IS ±2 mm.
 4. THE HEIGHT OF FOUNDATION EXCLUDES THERMAL ISOLATOR AND WATER PROOF.
 - * 5. EXPANSION BOLT & RUBBER PAD SHALL BE FURNISHED BY LIANG CHI
- (PLEASE DON'T PREPARE HOLE OF EXPANSION BOLT BEFORE INSTALLATION)

LIANG CHI IND. (THAILAND) CO.,LTD
TECHNIC DEPT.

FOR REFERENCE
 FOR APPROVAL
 OTHER.....

DATE: _____
TECHNIC BY: _____

REV.	DATE	DWG BY	APP.	NOTE
LBC-T-400				
Concrete Foundation				
APP.	K.Somnans	DESIGN	Annot	
CHECK	SURASAK	DWG BY.	Annot	
LIANG CHI INDUSTRY (THAILAND) CO., LTD. 223 Moo 9 Tab-Yaolad-KRABANG BANGKOK 10520 (NUM KRAL INDUSTRIAL ZONE LUANG-PAENG RD.)				
				LBC-T-400-02



LBC-T-400	A1 = A2 = ... = A6	B1 = B2 = ... = B12	C
	512	100	

UNIT : KG.

LIANG CHI IND. (THAILAND) CO.,LTD
 TECHNIC DEPT.
 FOR REFERENCE
 FOR APPROVAL
 APPROVAL
 OTHER:.....
 DATE:
 TECHNIC BY:

REV.	DATE	DWG BY	APP.	NOTE
LBC-T-400				
Loading Data				
APP.	K.Somnonsi	DESIGN	Annot	MM
CHECK	SURASAK	DWG BY.	Annot	DWG-NO
LIANG CHI INDUSTRY (THAILAND) CO., LTD. 223 Moo 9 Tab-Yaolad-Krabang Bangkok 10520 (NUM KRAI INDUSTRIAL ZONE LUANG-PAENG RD.)				LBC-T-400-03