



LIANG CHI INDUSTRY (THAILAND) CO., LTD.

COUNTER FLOW INDUCED DRAFT LBC TYPE COOLING TOWER SPECIFICATION

DATE :
 TOWER MODEL NO. : LBC - T - 350
 NO. OF SETS : 1

DESIGN & OPERATING CONDITIONS

WATER FLOW RATE. : 3,932 LPM.
 HOT WATER TEMP. : 37 °C
 COLD WATER TEMP : 32 °C
 AMB. WET BULB TEMP. : 28 °C
 EACH FAN B.H.P. : 8.33 BHP
 TOWER PUMP HEAD : 4 M
 DRIFT LOSS OF WATER FLOW RATE : 0.2 %
 EVAPORATION LOSS OF WATER FLOW RATE : 0.83 %
 DESIGN WIND LOAD : 150 Kg / M²

STRUCTURAL DETAILS

OVERALL DIMENSION : 4790 MM
 DRY WEIGHT : 1362 Kg
 OPERATING WEIGHT PER TOWER : 4620 Kg

CONSTRUCTION

TOWER SUPPORTER FRAME ASS'Y : H.D.G.S.
 CASING : F.R.P.
 CASING SUPPORTOR : H.D.G.S.
 COLD WATER BASIN : F.R.P.
 FILLING : P.V.C.
 FILLING SUPPORTOR : H.D.G.S.
 FAN GUARD : H.D.G.S.
 MECHANICAL EQUIPMENT SUPPORTOR : H.D.G.S.
 INLET LOUVER : P.V.C.
 BOLTS,NUTS & WASHERS : C.P.S.

LIANG CHI IND. (THAILAND) CO., LTD.	
TECHNIC DEPT.	
<input type="checkbox"/>	FOR REFERENCE
<input checked="" type="checkbox"/>	FOR APPROVAL
<input type="checkbox"/>	APPROVED
<input type="checkbox"/>	OTHER.....
DATE :	
TECHNIC BY :	



LIANG CHI INDUSTRY (THAILAND) CO., LTD.

COUNTER FLOW INDUCED DRAFT LBC TYPE COOLING TOWER SPECIFICATION

WATER DISTRIBUTION

STAND PIPE : P.V.C.
 SPRINKLER HEAD : A.A.
 MODEL : LSH - 200
 SPRINKLER PIPE : P.V.C.

MECHANICAL EQUIPMENTS

FAN UNIT

NO. OF UNIT : 1 UNIT / SET
 TYPE : AXIAL FLOW
 MODEL : LSF-240
 MANUFACTUROR : LIANG CHI IND.CO.,LTD.
 DIAMETER : 2360 MM
 NO. OF BLADES : 4
 FAN SPEED : 398 RPM
 TIP SPEED : 49.18 M/S
 BLADE MATERIAL : A.A.
 HUP MATERIAL : A.A.
 AIR VOLUME : 2200 M³ / MIN/SET

SPEED REDUCER

NO. OF UNIT : 1 UNIT / SET
 TYPE : BELT
 MODEL : VBA-075-B
 MANUFACTUROR : LIANG CHI IND.CO.,LTD.
 REDUCTION RATIO : 2.40 : 1

LIANG CHI IND. (THAILAND) CO., LTD.	
TECHNIC DEPT.	
<input type="checkbox"/>	FOR REFERENCE
<input checked="" type="checkbox"/>	FOR APPROVAL
<input type="checkbox"/>	APPROVED
<input type="checkbox"/>	OTHER.....
DATE :	
TECHNIC BY :	



LIANG CHI INDUSTRY (THAILAND) CO., LTD.

COUNTER FLOW INDUCED DRAFT LBC TYPE COOLING TOWER SPECIFICATION

FAN MOTOR

NO. OF UNIT	:	1	UNIT / SET
TYPE	:	TEFC	
INSULATION	:	CLASS F IP55	
MANUFACTUROR	:	LIANG CHI	
SPEED	:	950	RPM
RATED H.P	:	10	H.P * 6 P
POWER SOURCE (VOLT / PHASE / HZ)	:	380 / 3 / 50	

PIPING CONNECTION

	SIZE		Q'TY / SET
WATER INLET	:	8 B (200A)	1
WATER OUTLET	:	8 B (200 A)	1
AUTO FILL	:	1 1/4 B (32 A)	1
QUICK FILL	:	1 1/4 B (32 A)	1
OVER FLOW	:	2 B (50 A)	1
DRAIN	:	2 B (50 A)	1


REMARK

F.R.P : FIBERGLASS REINFORCE PLASTIC

H.D.G.S : HOT DIP GALVALNIZED STEEL

A.A. : ALUMINIUM ALLOY

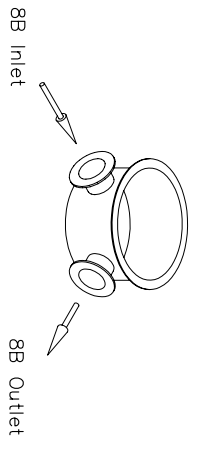
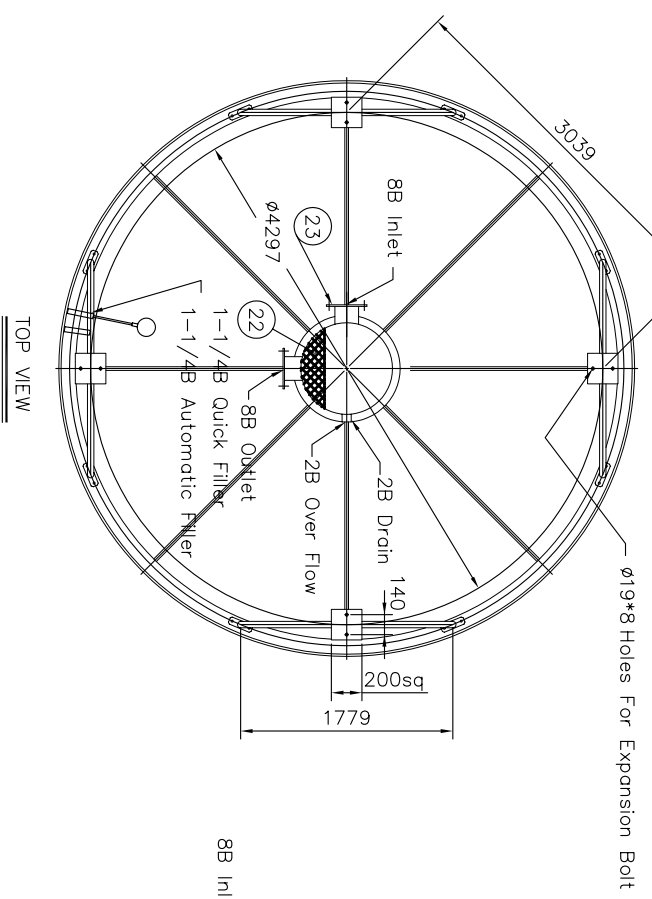
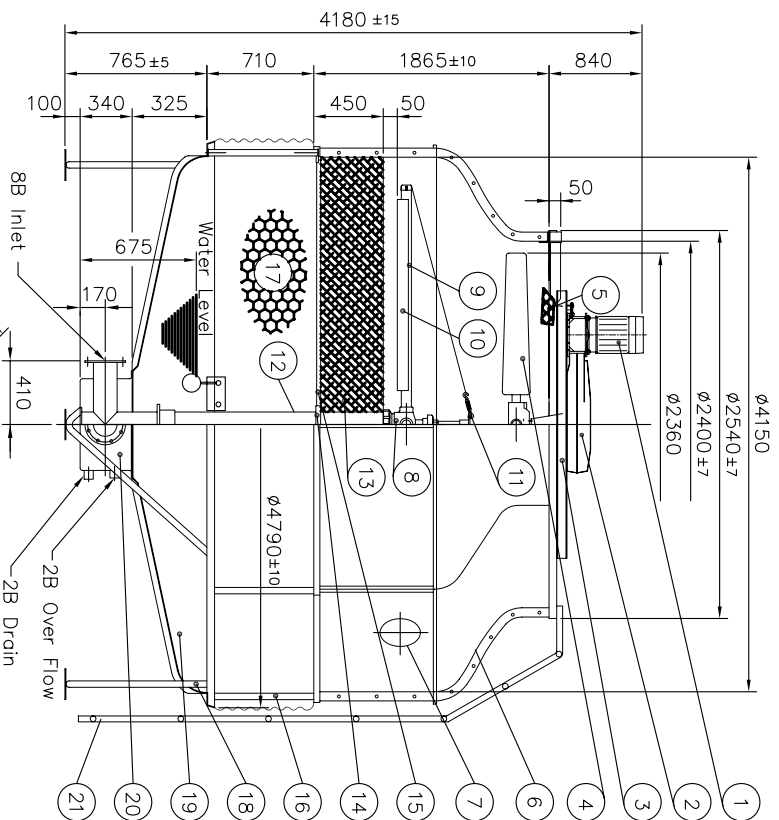
C.P.S. : CHROMATED - PLATING STEEL

DESIGNED : 

CHECK : 

APPROVE : 

LIANG CHI IND. (THAILAND) CO., LTD.	
TECHNIC DEPT.	
<input type="checkbox"/>	FOR REFERENCE
<input checked="" type="checkbox"/>	FOR APPROVAL
<input type="checkbox"/>	APPROVED
<input type="checkbox"/>	OTHER.....
DATE :	
TECHNIC BY :	



LIANG CHI IND. (THAILAND) CO.,LTD
 TECHNIC DEPT.
 FOR REFERENCE
 FOR APPROVAL
 OTHER.....
 DATE:
 TECHNIC BY:

Description	M.T	Specification	Qty
1 Fan Motor		10HP*6P	1/pcs.
2 Belt Reducer		VBA-075-B	1/set.
3 Motor Framework Ass'y	H.D.G.S		1/set.
4 Fan	A.A	LSF-240	1/set.
5 Fan Guard	H.D.G.S		1/set.
6 Casing	F.R.P.		8/pcs.
7 Hand Hole	E.V.A		1/pcs.
8 Sprinkler Head	A.A	LSH-200	1/set.
9 Sprinkler Pipe	P.V.C.		6/pcs.
10 Eliminator	F.R.P.		6/pcs.
11 Tension Device	H.D.G.S		6/set.
12 Stand Pipe	P.V.C.		1/pcs.
13 Filling	P.V.C.		1/set.
14 Stopper or Column	H.D.G.S		1/set.
15 Filling Supporter	H.D.G.S		1/set.
16 Casing Supporter	H.D.G.S		8/pcs.
17 Inlet Louver	P.V.C.		1/set.
18 Frame Ass'y	H.D.G.S		1/set.
19 Water Basin	F.R.P.		8/pcs.
20 Water Sump	F.R.P.		1/pcs.
21 Ladder	H.D.G.S		1/set.
22 Strainer	ST.S		1/pcs.
23 Flange	H.D.G.S		2/pcs.

Abbrev. : 1. H.D.G.S.: Hot Dip Galvanized Steel

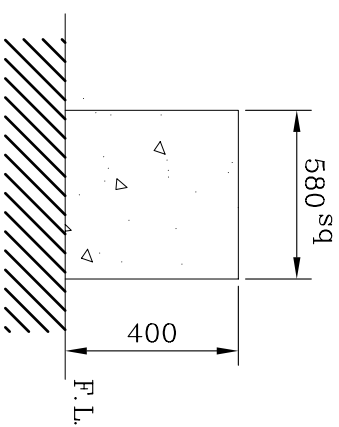
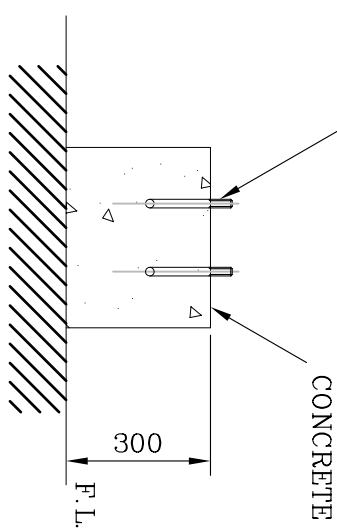
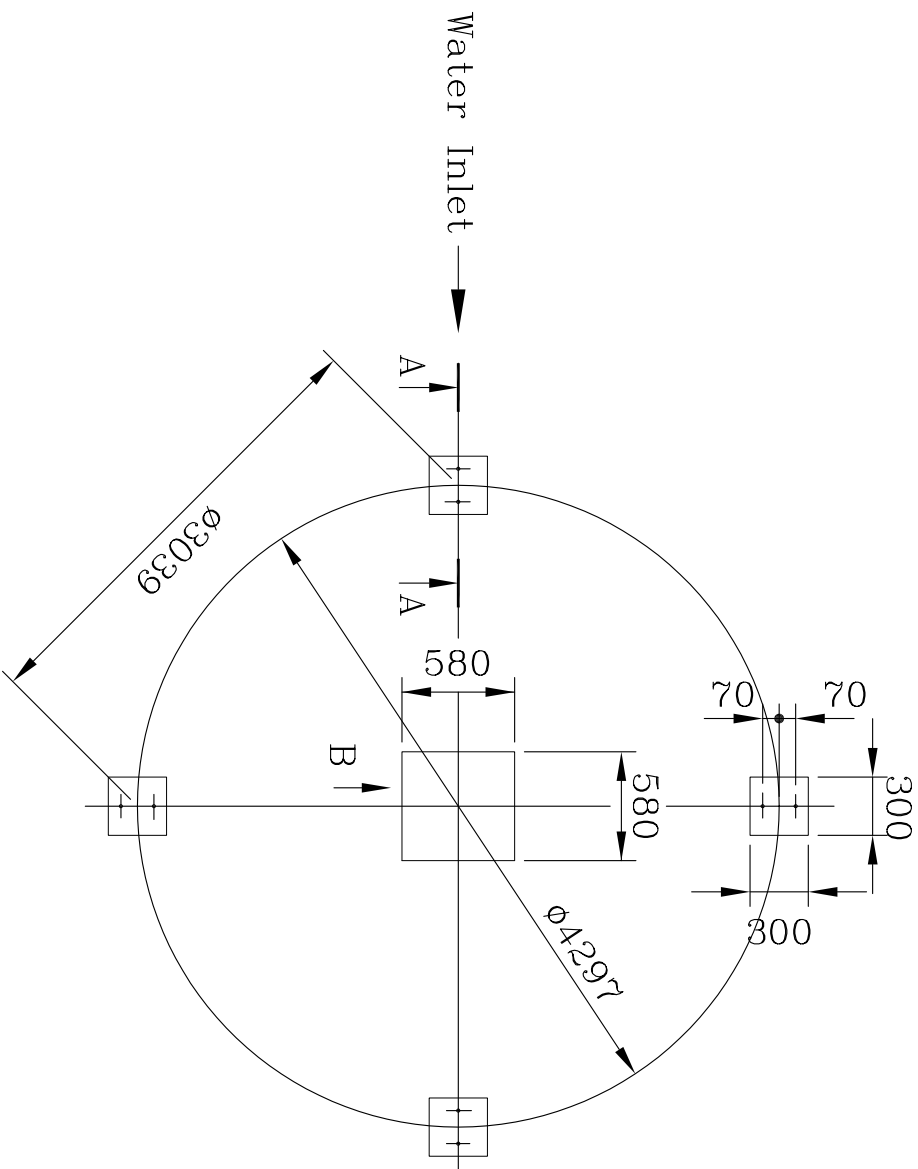
- 2. A.A : Aluminum Alloy
- 3. ST.S : Stainless Steel 304
- 4. F.R.P. : Fiberglass Reinforced Plastic

Drain	50A (2 B)	Over Flow	50A(2 B)
Outlet	200A (8 B)	Quick Filler	32A(1 1/4 B)
Inlet	200A (8 B)	Automatic filler	32A(1 1/4 B)
Pipe Connections			
Dry Weight	1,362 kgs	Operating Weight	4,620 kgs
Loading Data			
Ambient Wetbulb	: 28 °C	Air Volume	: 2,200 M ³ /MIN
Outlet Water Temp	: 32 °C	Water Flow	: 3,932 LPM
Inlet Water Temp	: 37 °C	Cooling Capacity	: 1,179,600 Kcal/HR

Design Condition

REV.	DATE	DWG BY	APP.	NOTE
TITLE				
LBC-T-350				
OUTLINE VIEW				
APP.	K.Sommons	DESIGN	Amnat	MM
CHECK	SURASAK	DWG BY	Amnat	DWG-NO
LIANG CHI INDUSTRY (THAILAND) CO., LTD. 223 Moo 9 Tab-Yaolad-Krabang Bangkok 10520 (NUM Kral Industrial Zone Luang-Paeng Rd.)				LBC-T-350-01

EXPANSION BOLT (BY LIANG CHI)



B VIEW

REMARK :

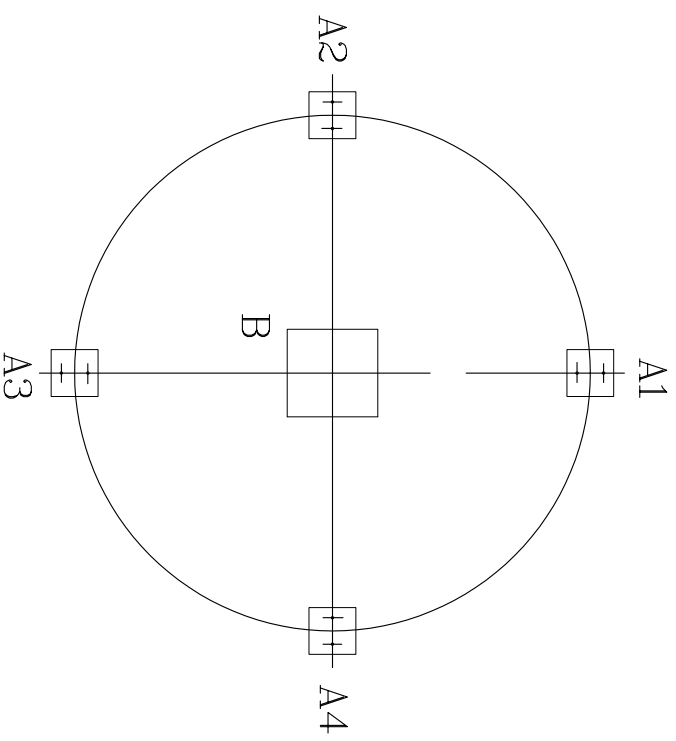
1. THIS FOUNDATION DRAWING IS PROVIDED FOR END USER'S REFERENCE.
 2. COOLING TOWER DOES NOT INCLUDE FOUNDATION
 3. THE LEVEL TOLERANCE OF FOUNDATION IS ± 2 mm.
 4. THE HEIGHT OF FOUNDATION EXCLUDES THERMAL ISOLATOR AND WATER PROOF.
 - * 5. EXPANSION BOLT & RUBBER PAD SHALL BE FURNISHED BY LIANG CHI
- (PLEASE DON'T PREPARE HOLE OF EXPANSION BOLT BEFORE INSTALLATION)

LIANG CHI IND. (THAILAND) CO.,LTD
TECHNIC DEPT.

FOR REFERENCE
 FOR APPROVAL
 APPROVAL
 OTHER.....

DATE :
TECHNIC BY :

REV.	DATE	DWG BY	APP.	NOTE
LBC-T-350				
Concrete Foundation				
APP.	K.Somnans	DESIGN	Annat	
CHECK	SURASAK	DWG BY.	Annat	
LIANG CHI INDUSTRY (THAILAND) CO., LTD. 223 Moo 9 Tab-Yaolad-Krabang Bangkok 10520 (NUM KRAL INDUSTRIAL ZONE LUANG-PAENG RD.)				
				MM
				X
				DWG-NO
				LBC-T-350-02



UNIT : KG.

LBC-T-350	A1=A2=A3=A4	B
	478	2,708

LIANG CHI IND. (THAILAND) CO.,LTD
 TECHNIC DEPT.
 FOR REFERENCE
 FOR APPROVAL
 APPROVAL
 OTHER:.....
 DATE:
 TECHNIC BY:

REV.	DATE	DWG BY	APP.	NOTE
LBC-T-350				
Loading Data				
APP.	K.Somnonsi	DESIGN	Annnt	MM
CHECK	SURASAK	DWG BY.	Annnt	DWG-NO
LIANG CHI INDUSTRY (THAILAND) CO., LTD. 223 Moo 9 TAB-YAO LAD-KRABANG BANGKOK 10520 (NUM KRAI INDUSTRIAL ZONE LUANG-PAENG RD.)				LBC-T-350-03